

Bomanite Exposed Aggregate Systems

PROJECT PROFILE

POWERHOUSE PLAZA



PROJECT INFORMATION

PROJECT SPECIFICATIONS/INFORMATION

Client Need: Designers were looking for a paving material with the right texture for their vision of this plaza.

Solution: Bomanite Licensee Colorado Hardscapes showed the designers the exclusive Bomanite Exposed Aggregate System, SandScape Texture® by Bomanite paving installed nearby on the NCSL building and they were sold. Although the colors and patterns are quite different, the finish lends a nice texture to many design styles.

Results: This plaza proves how concrete can take any shape. The dramatic lines of the design are enhanced by elegant, crisp SandScape Texture paving with stained bands. Seat walls along the structure complete the look.

PROJECT DETAILS

LOCATION

Denver, CO

CLIENT

Lowry Redevelopment Authority

PROJECT DESIGNER

Design Workshop

INSTALL COMPLETED

September 2003

BOMANITE SYSTEMS

Exposed Aggregate - SandScape Texture® by Bomanite

BOMANITE LICENSED CONTRACTOR

Colorado Hardscapes, Inc.

8085 E. Harvard Avenue

Denver, CO 80231

TEL: 303-750-8200

FAX: 303-750-8886

Website: www.coloradohardscapes.com

Email: info@coloradohardscapes.com

Bomanite Exposed Aggregate Systems

PROJECT PROFILE

POWERHOUSE PLAZA



Powehouse Plaza - Bomanite Sandscape Texture



Powehouse Plaza - Bomanite Sandscape Texture



Powehouse Plaza - Bomanite Sandscape Texture



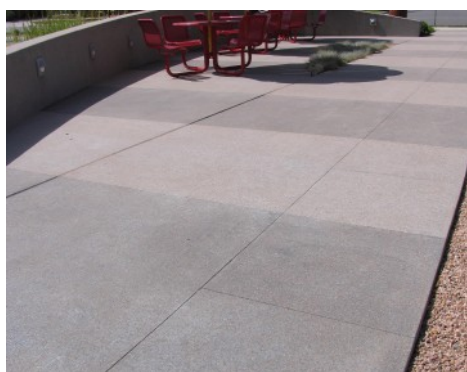
Powehouse Plaza - Bomanite Sandscape Texture



Powehouse Plaza - Bomanite Sandscape Texture



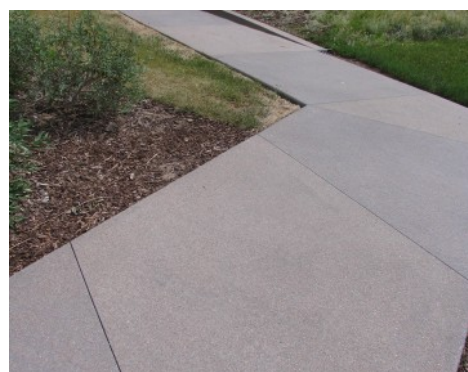
Powehouse Plaza - Bomanite Sandscape Texture



Powehouse Plaza - Bomanite Sandscape Texture



Powehouse Plaza - Bomanite Sandscape Texture



Powehouse Plaza - Bomanite Sandscape Texture