

Bomanite®

Broadcast Aggregate Standard Color Chart

COLOR FOR:

HIGH
PERFORMANCE
COATINGS



COATINGS TO
ENHANCE AND
PROTECT
CONCRETE
SURFACES



Bomanite Broadcast Aggregate Color Chart

STANDARDS



TP-BA-031011-01



TP-BA-030811-01



TP-BA-030811-02



TP-BA-030911-01



TP-BA-030911-02



TP-BA-030911-03



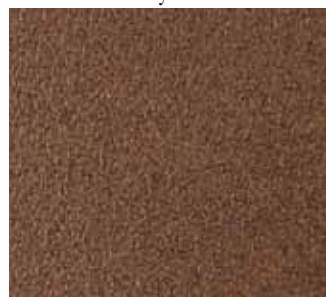
TP-BA-031011-02



TP-BA-031011-03

CUSTOMS

Recycled



TP-BA-031011-04

Industrial



TP-BA-040711-04

Mineral



TP-BA-031011-05

Solid



TP-BA-030911-04

IMPORTANT NOTES:

Bomanite Broadcast Aggregate floors consist of decorative and/or industrial aggregates encapsulated in high performance, two-component primer, body and top coats. The base of design process utilizes Bomanite Florspartic 100 however certain project specific criteria may influence the selection of a different Bomanite coating. Consult with your local Bomanite Toppings Licensee or Bomanite Technical Services for information on the high performance coatings appropriate for your particular application. For a complete listing of the Bomanite High Performance Coatings, visit www.bomanite.com/toppings/crossreference.

Standard aggregate blends in standard gradations are pictured. Custom blends and gradations are available upon request. Unique aggregates such as recycled plastic, glass and walnut shells along with minerals such as garnet may be utilized to create custom floors and walks. For industrial applications, hard aggregates such as silica carbide and aluminum oxide may be selected. Consult with your local Bomanite Licensed Toppings installer for additional information on custom aggregate blends and unique aggregates.

It is strongly recommended that samples be created, viewed and approved using construction techniques and materials identical to those that will be used in the actual construction of the project. This sampling process must be completed prior to specifying the final color and appearance.

Bomanite®

The Bomanite Company
8777 Auburn Folsom Rd. #108
Granite Bay, CA 95746
(303) 369-1115 Fax: (303) 291-0282
www.bomanite.com

©2011 The Bomanite Company. Bomanite® is a registered trademark and servicemark with the U.S. Patent Office and other countries. 5C0611

Chart 400.11

Contact your authorized Bomanite Toppings
Licensed Contractor to request a color chart.

NOTE: The Bomanite Company strives to provide website users with the most accurate color information possible. Colors shown approximate as closely as possible the appearance of selected product, however the screen colors should only be used for ideas as these colors are low-resolution and do not represent final results. Please contact your local Bomanite Licensed Contractor to order product color charts and samples for the most accurate representation of available standard colors.