

Bomanite®

Chemical Stain Standard Color Chart

TRANSLUCENT
STAINS FOR:

IMPRINT SYSTEMS

TOPPING SYSTEMS

CUSTOM POLISHING
SYSTEMS

EXPOSED AGGREGATE
SYSTEMS

PERVIOUS CONCRETE
SYSTEMS

COLOR TO
ENHANCE
YOUR
EVERYDAY
SPACES



50% Pine Solution Applied To
Uncolored Sandstone Texture



100% Pine Applied To Harvest Amber
Color Hardened Bomacron



20% Pine Solution Applied To Hand
Troweled White Color Hardener

Bomanite Chemical Stain Color Chart

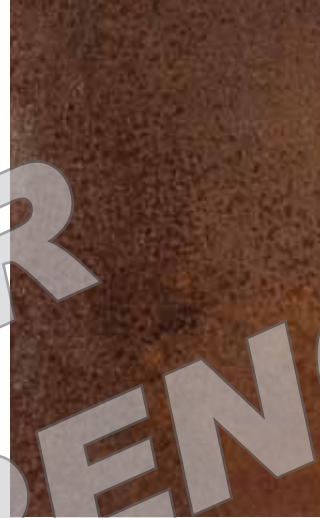
STANDARDS (Applied to Hand Troweled Uncolored Gray Concrete)



Sea Mist



Caribbean Blue



Seal Brown



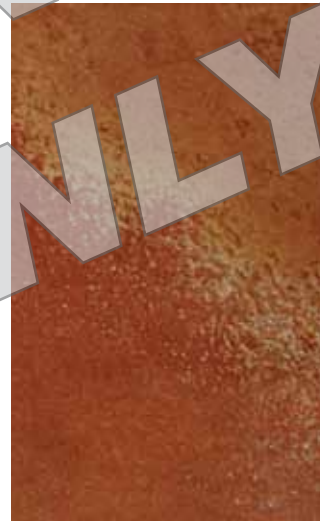
Olive



Auburn



Ebony



Pine



Rust Red

IMPORTANT NOTES:

There is an element of uncertainty and unpredictability inherent in the use and final appearance of chemical stain. The uniqueness of each installation along with the variegated hues that form within a single color is considered to be desirable when selecting Bomanite Chemical Stain. It is not uncommon to see significant yet unexpected variations in color within the same application. The use of blue and green based Bomanite Chemical Stains are not recommended for exterior applications where the moisture content of the concrete is uncontrollable.

When applied to traditional concrete or any portland cement-based product, Bomanite Chemical Stains will produce a wide range of finished colors depending on many factors; age and condition of substrate, cement color and content, moisture content, the presence of polymers or other admixtures, pozzolans such as fly ash or similar, the method of application, the dwell time allowed, finishing techniques, mix designs, curing practices and the sealer selected along with other factors. It is recommended that hard troweled, dense concrete or previously sealed surfaces be mechanically prepared by grinding prior to staining.

It is highly recommended that samples be created, viewed and approved using construction techniques and materials identical to those that will be used in the actual construction of the project. This sampling process must be completed prior to specifying the final color and appearance.

Bomanite®

The Bomanite Company
8777 Auburn Folsom Rd. #108
Granite Bay, CA 95746
(303) 369-1115 Fax: (303) 291-0282
www.bomanite.com

©2011 The Bomanite Company. Bomanite® is a registered trademark and servicemark with the U.S. Patent Office and other countries. 5C0711

Chart 400.13

Contact your authorized Bomanite
Licensed Contractor to request a color chart.

NOTE: The Bomanite Company strives to provide website users with the most accurate color information possible. Colors shown approximate as closely as possible the appearance of selected product, however the screen colors should only be used for ideas as these colors are low-resolution and do not represent final results. Please contact your local Bomanite Licensed Contractor to order product color charts and samples for the most accurate representation of available standard colors.