

## Bomanite Toppings Systems

### PROJECT PROFILE

#### ORU-ARMAND HAMMER ALUMNI STUDENT CENTER



### PROJECT INFORMATION

The new, state-of-the-art Armand Hammer Alumni-Student Center is the first new construction project on campus in 30 years and designed by KSQ Architects, to provide a modern, sleek and youthful structure. The \$11 million building encompasses 28,000 square feet and was designed to provide food, fun and fellowship for ORU's students and alumni. Bomanite of Tulsa provided approx. 16,384 square feet of Bomanite Chemically Stained flooring throughout the building to complement a vibrant, youthful color palette that delineates student activity zones into quiet spaces, pool tables and video game consoles, live performance areas, an Internet café and a 12' x 21' screen for viewing concerts, sporting events or video game competitions. Bomanite of Tulsa completed the project in three phases working around other trades to keep the building of the project moving and on schedule. Several dilutions of Bomanite Chemical Stain were used to achieve the mix of lighter and darker colors and then sealed with an acrylic sealer for protection. For a closer look at this amazing project here is a link to a short video: <http://vimeo.com/channels/353908>

### PROJECT DETAILS

#### LOCATION

Tulsa, OK

#### CLIENT

Oral Roberts University

#### PROJECT DESIGNER

KSQ Architects, PC

#### GENERAL CONTRACTOR

Key/Lippert, A Joint Venture

#### INSTALL COMPLETED

January 2013

#### SQUARE FEET

16,384

#### BOMANITE SYSTEMS

Toppings Systems:  
Patene Arctectura by Bomanite

#### BOMANITE PRODUCTS

Bomanite Chemical Stain Ebony

#### BOMANITE LICENSED CONTRACTOR

Bomanite of Tulsa  
P.O. Box 471189  
Tulsa, OK 74147  
TEL: 918-744-6272  
FAX: 918-744-8470  
Website: [www.bomaniteoftulsa.com](http://www.bomaniteoftulsa.com)  
Email: [charles@bomaniteoftulsa.com](mailto:charles@bomaniteoftulsa.com)

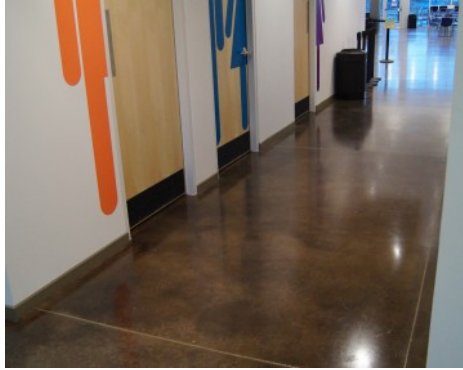
# Bomanite Toppings Systems

## PROJECT PROFILE

### ORU-ARMAND HAMMER ALUMNI STUDENT CENTER



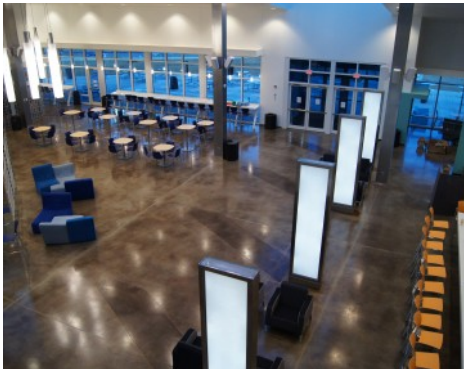
ORU-Armand Hammer Alumni Student Center -  
Bomanite Chemical Stain



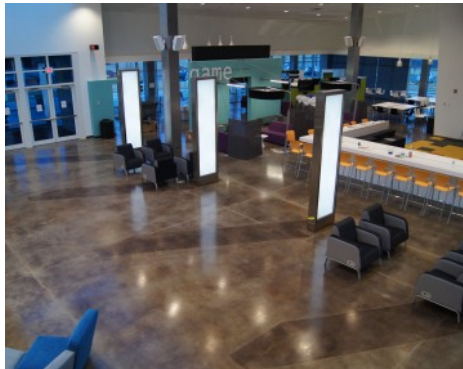
ORU-Armand Hammer Alumni Student Center -  
Bomanite Chemical Stain



ORU-Armand Hammer Alumni Student Center -  
Bomanite Chemical Stain



ORU-Armand Hammer Alumni Student Center -  
Bomanite Chemical Stain



ORU-Armand Hammer Alumni Student Center -  
Bomanite Chemical Stain



ORU-Armand Hammer Alumni Student Center -  
Bomanite Chemical Stain