

## Bomanite Toppings Systems

### PROJECT PROFILE

#### VALLEY FAIR MALL



### PROJECT INFORMATION

Bomanite Licensed Contractor, Architectural Concrete & Design was approached by the Mall Management team to design a topping system to go directly over their existing tile without any demolition. With the help of The Bomanite Company's Director of Technical Services, Terry Grimble, the best system to use was designed. The work was to be performed at night once the stores were closed for the evening. Since the stores were to remain open during the construction stages, the fast drying Bomanite Thin-Set was chosen. This cost effective system saved the mall management team money by not having to remove the existing tile and also keeping the mall open during the process. The new design called for a variety of concrete stamp patterns, colors and streetlights that would transform the mundane walkway into an interesting, winding streetscape. Throughout the concourse, the Bomacron Basketweave Used Brick pattern integrally colored with Bomanite Brick Red and the Bomacron Random Slate pattern in Shale Gray covers much of the way. For visual breaks, the Bomacron 8-inch English Slate Texture border in Sand is straight in places and free-flowing in others. For even more variety, the Bomacron 12-inch Boardwalk pattern in Sonora Tan graces the mall's roundabout and accents selected areas. Bomanite Thin-Set, a specially formulated polymer-modified topping mix that can be imprinted, will bond to any stable, structurally sound substrate. It typically is installed 3/8-inch thick and can be feathered to a zero edge. It is an extremely effective alternative to demolishing an existing substrate. Bomanite Thin-Set also can be exposed to traffic quickly — which was a priority for this job.

### PROJECT DETAILS

#### LOCATION

West Valley City, UT

#### CLIENT

Valley Fair Mall

#### INSTALL COMPLETED

September 2012 / 70,000 sq. ft.

#### BOMANITE SYSTEMS

Bomanite Toppings System - Thin-Set by Bomanite  
Bomanite Patterns: Random Slate, Basketweave Used Brick, Boardwalk, English Slate Texture  
Bomanite Products: Bomanite Thin-Set II Stampable Overlay System, Bomanite XP Primer 100 FC Epoxy Resin, Bomanite Florthane WB Gloss Urethane, Bomanite Integral Color and Release Agents

#### NAME OF BUSINESS

Renovate Existing Tile Floor

#### BOMANITE LICENSED CONTRACTOR

Architectural Concrete & Design  
932 Kasey Circle  
Draper, UT 84020  
TEL: 801-576-8871  
FAX: 801-576-8892  
Website: [www.concretedesign.biz](http://www.concretedesign.biz)  
Email: [rdevjohnson@aol.com](mailto:rdevjohnson@aol.com)

# Bomanite Toppings Systems

## PROJECT PROFILE

### VALLEY FAIR MALL



Valley Fair Mall - Renovation Bomanite Thin-Set; Basketweave Used Brick, Random Slate, English Slate Texture, Boardwalk



Valley Fair Mall - Renovation Bomanite Thin-Set; Basketweave Used Brick, Random Slate, English Slate Texture, Boardwalk



Valley Fair Mall - Renovation Bomanite Thin-Set; Basketweave Used Brick, Random Slate, English Slate Texture, Boardwalk



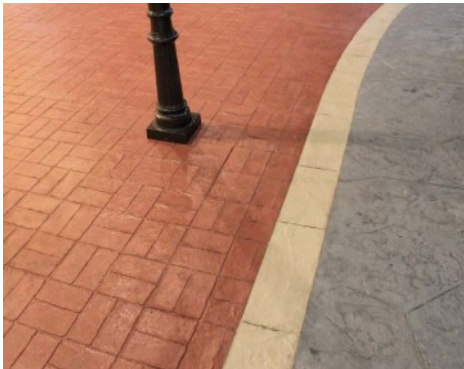
Valley Fair Mall - Renovation Bomanite Thin-Set; Basketweave Used Brick, Random Slate, English Slate Texture



Valley Fair Mall - Renovation Bomanite Thin-Set; Basketweave Used Brick



Valley Fair Mall - Renovation Bomanite Thin-Set; Boardwalk, Random Slate,



Valley Fair Mall - Renovation Bomanite Thin-Set; Basketweave Used Brick, Random Slate, English Slate Texture



Valley Fair Mall - Before Renovation and during installation