

## Bomanite Exposed Aggregate Systems

### PROJECT PROFILE

NAN MCKAY PUBLIC HOUSING



### PROJECT INFORMATION

Nan McKay needed to update its 40 yr old patio for its residence. They decided to tear out and start fresh and enlisted the help from BKV Group, an architectural firm in Minneapolis. BKV and Bomanite Licensee, Concrete Arts, have a great relationship. They contacted Tom Graf and Mike Dougherty to help form ideas in how they can meet the needs of this public housing development. They wanted to expand the patio area, create a sustainable structure, make appealing for residence to use, and create a pathway to the trash bin. Together the team decided to amp the area up with color and design scores. BKV took a hold of the design of the project. Bomanite Sandscape Texture was chosen for the area for the design elements, low maintenance and sustainability. The concrete was integrally colored with Bomanite Gobi Desert and poured. Once the concrete was set up, Concrete Arts marked out the design of the patios and cut in faux joints/design scores with a hand grinder. The area was then stained with Bomanite Chemical Stain colors Ebony, Caribbean Blue and Rust Red.

### PROJECT DETAILS

#### LOCATION

South St. Paul, MN

#### CLIENT

Nan McKay Public Housing

#### PROJECT DESIGNER

BKV Group

#### GENERAL CONTRACTOR

Meisinger Construction

#### INSTALL COMPLETED

July 2010

#### SQUARE FEET

3,000

#### BOMANITE SYSTEMS

Exposed Aggregate - Bomanite Sandscape Texture  
Bomanite Integral Color: Gobi Desert  
Bomanite Chemical Stain: Ebony, Caribbean Blue, Rust Red

#### NAME OF BUSINESS

Updated paving for exterior patio

#### BOMANITE LICENSED CONTRACTOR

Concrete Arts

575 Schommer Drive

Hudson, WI 54016

TEL: 715-386-8750 - Wisconsin

TEL: 651-436-2525 - Minnesota

FAX: 715-386-5600

Email: [info@concretearts.com](mailto:info@concretearts.com)

Website: [www.concretearts.com](http://www.concretearts.com)

# Bomanite Exposed Aggregate Systems

## PROJECT PROFILE NAN MCKAY PUBLIC HOUSING



Nan McKay Public Housing - Bomanite Sandstone and Chemical Stain



Nan McKay Public Housing - Bomanite Sandstone and Chemical Stain



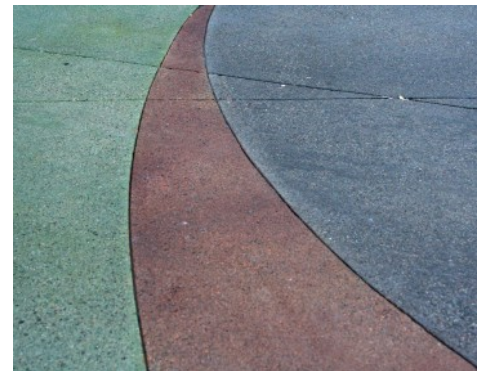
Nan McKay Public Housing - Bomanite Sandstone and Chemical Stain



Nan McKay Public Housing - Bomanite Sandstone and Chemical Stain



Nan McKay Public Housing - Bomanite Sandstone and Chemical Stain



Nan McKay Public Housing - Bomanite Sandstone and Chemical Stain



Nan McKay Public Housing - Bomanite Sandstone and Chemical Stain