

Bomanite Imprint Systems

PROJECT PROFILE

GRAND RIOS WATERPARK



PROJECT INFORMATION

PROJECT SPECIFICATIONS/INFORMATION

Description: Bomanite Licensed Contractor, Bulach Custom Rock, create handicap accessible ramps for one of the Midwest's Largest Indoor Waterparks in Greater Minneapolis/St Paul, Minnesota.

Bulach Custom Rock scope of work included the set up and pour of approximately 11,000 sq.ft. of Bomcaron Imprinted Concrete with one 70' handicap ramp, one 30' handicap ramp with monolithic bridge, pan steps, a 60' walking bridge, and two 8 riser sets of steps, along with over 2,000 lineal feet of Steigmeier pool coping poured monolithically with the deck.

Bomacron Slate Texture areas were poured using Bomanite Coquina Color hardener for the base color, then the areas were accented using a specialty color, Bulach Bronze, developed by Bomanite. Once these areas were imprinted, the pool coping was finished using a Bulach Bronze slurry and given a light sand finish. The pool copings were finished while there was water in the pools and river. This portion of the work was completed using a duck boat tied off in different areas. The Bomacron wood plank pattern areas were poured using a Taupe Integral color. These areas were stained the following day with Bomanite Forest Brown Con-Color.

The water park posed additional challenges, such as; designing a monolithic concrete ramp and bridge to accommodate wheelchairs to the upper hot tub, pouring of concrete using 5-gallon buckets due to inaccessibility of pumps or other delivery systems caused by water factors, and working to assure the slope of the decks flowed to over 1,000 feet of deco drain and 27' panned floor drains. Bulach Custom Rock utilized their skills and expertise knowledge to overcome the challenges and provide the client with the final product.

PROJECT DETAILS

LOCATION

Brooklyn Park, MN

PROJECT DESIGNER

Elness Swenson & Graham Architects

SQUARE FEET

11,500

BOMANITE SYSTEMS

Imprint Systems; Bomacron

Bomanite Patterns/Products: Slate Texture, Wood Plank
Bomanite Color Hardener, Integral Color, Liquid Release
Agent,

Bomanite Forest Brown Con-Color

BOMANITE LICENSED CONTRACTOR

Bulach Custom Rock

1870 East 50th Street, Suite 14

Inver Grove Heights, MN 55077

TEL: 651-455-3384

Website: www.bulachcustomrock.com

Email: info@bulachcustomrock.com

Bomanite Imprint Systems

PROJECT PROFILE

GRAND RIOS WATERPARK



Grand Rios Waterpark - Bomanite Imprinted Concrete Systems



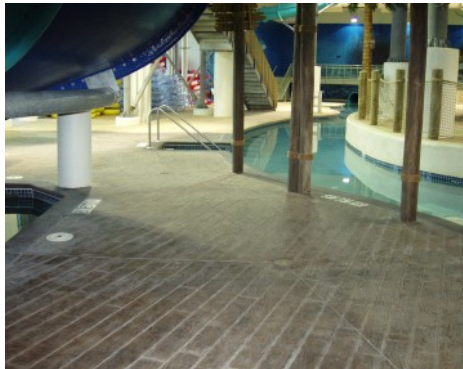
Grand Rios Waterpark - Bomanite Imprinted Concrete Systems



Grand Rios Waterpark - Bomanite Imprinted Concrete Systems



Grand Rios Waterpark - Bomanite Imprinted Concrete Systems



Grand Rios Waterpark - Bomanite Imprinted Concrete Systems



Grand Rios Waterpark - Bomanite Imprinted Concrete Systems



Grand Rios Waterpark - Bomanite Imprinted Concrete Systems



Grand Rios Waterpark - Bomanite Imprinted Concrete Systems



Grand Rios Waterpark - Bomanite Imprinted Concrete Systems

Bomanite Imprint Systems

PROJECT PROFILE

GRAND RIOS WATERPARK



Grand Rios Waterpark - Bomanite Imprinted Concrete Systems



Grand Rios Waterpark - Bomanite Imprinted Concrete Systems



Grand Rios Waterpark - Bomanite Imprinted Concrete Systems



Grand Rios Waterpark - Bomanite Imprinted Concrete Systems



Grand Rios Waterpark - Bomanite Imprinted Concrete Systems