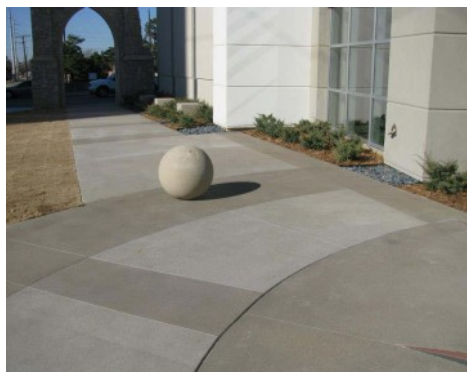


Bomanite Exposed Aggregate Systems

PROJECT PROFILE

FIRST UNITED METHODIST CHURCH



PROJECT INFORMATION

Bomanite Licensee, Bomanite of Tulsa created a stunning exterior star graphic that was incorporated into the walkways at the First United Methodist Church located in Tulsa, OK. SandScape Texture by Bomaanite in a neutral color was installed with the use of Bomanite Con-Color to accentuate the graphic providing an appealing and affordable design.

Bomanite SandScape® Texture is designed for outdoor applications where an alternate to a conventional concrete finish is required. Bomanite SandScape® Texture resembles sand blasted concrete and can incorporate specialized colored sands and/or aggregates exceeding 3/8" diameter. The finish is an economical alternate to other decorative concrete finishes while producing a monolithic concrete slab at low life-cycle cost due to the pre-aged nature of the surface. Used in combination with a variety of color and staining options, Bomanite SandScape® Texture creates consistent texture and durable hardscapes ideal for plazas, walkways, shopping centers, schools and more.

PROJECT DETAILS

LOCATION

Tulsa, OK

PROJECT DESIGNER

Tulsa Design Group, LLC

GENERAL CONTRACTOR

Oakridge Builders, LLC

INSTALL COMPLETED

March 2013

SQUARE FEET

2,524

BOMANITE SYSTEMS

Exposed Aggregate System -SandScape Texture
Patene Arctectura Con-Color

BOMANITE LICENSED CONTRACTOR

Bomanite of Tulsa

P.O. Box 471189

Tulsa, OK 74147

TEL: 918-744-6272

FAX: 918-744-8470

Website: www.bomaniteoftulsa.com

Email: charles@bomaniteoftulsa.com

Bomanite Exposed Aggregate Systems

PROJECT PROFILE

FIRST UNITED METHODIST CHURCH



First United Methodist Church - Sandstone Texture with Bomanite Con-Color



First United Methodist Church - Sandstone Texture with Bomanite Con-Color



First United Methodist Church - Sandstone Texture with Bomanite Con-Color



First United Methodist Church - Sandstone Texture with Bomanite Con-Color