

Bomanite Exposed Aggregate Systems

PROJECT PROFILE

STANDING BEAR MUSEUM



PROJECT INFORMATION

PROJECT SPECIFICATIONS/INFORMATION

Description: Landplan Consultants Inc. approached Bomanite Licensed Contractor, Bomanite of Tulsa, Inc, for assistance with developing the decorative pavement for Standing Bear Museum/Osage Nation Byway Interpretive Center Improvements in early 2012. An attempt by another concrete contractor had been made, but was unable to keep the project under budget. While working closely with the architect, Bomanite of Tulsa proposed using SandScape Texture® by Bomanite with accent colors using Con-Color by Bomanite. The riverbed and trail were highlighted using Exposed Revealed by Bomanite glass series.

PROJECT DETAILS

LOCATION

Ponca City, OK

GENERAL CONTRACTOR

Rick Scott Construction, Inc.

INSTALL COMPLETED

August 2012

SQUARE FEET

2,206

BOMANITE SYSTEMS

Exposed Aggregate: SandScape and Revealed
Patène Artectura: Con-Color

BOMANITE LICENSED CONTRACTOR

Bomanite of Tulsa, Inc.

4637 S 101st E Ave

Tulsa, OK 74147

Tel: 918-744-6272

Fax: 918-744-8470

Website: www.bomaniteoftulsa.com

Email: info@bomaniteoftulsa.com

Bomanite Exposed Aggregate Systems

PROJECT PROFILE

STANDING BEAR MUSEUM



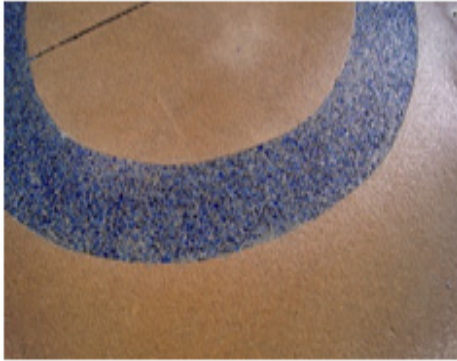
Standing Bear Museum - Exposed Aggregate Systems
Bomanite Revealed and Bomanite Sandscape



Standing Bear Museum - Exposed Aggregate Systems
Bomanite Revealed and Bomanite Sandscape



Standing Bear Museum - Exposed Aggregate Systems
Bomanite Revealed and Bomanite Sandscape



Standing Bear Museum - Exposed Aggregate Systems
Bomanite Revealed and Bomanite Sandscape



Standing Bear Museum - Exposed Aggregate Systems
Bomanite Revealed and Bomanite Sandscape



Standing Bear Museum - Exposed Aggregate Systems
Bomanite Revealed and Bomanite Sandscape



Standing Bear Museum - Exposed Aggregate Systems
Bomanite Revealed and Bomanite Sandscape