

Bomanite Exposed Aggregate Systems

PROJECT PROFILE

PATTERSON RESIDENCE DRIVEWAY



PROJECT INFORMATION

The Patterson's contacted Bomanite Licensee, Bomanite Toronto in need of a driveway and patio area that was as awe inspiring as their home. They wanted something that was durable enough for the Canadian winters, low maintenance as well as stylish in design. Bomanite Toronto worked with the homeowners, providing samples of different systems, aggregates and exposure levels to find the right style and design for their project. The Bomanite SandScape Texture Exposed Aggregate System was chosen with a Buckskin Integral color for the main driveway. Approximately 3,000 square feet of concrete was poured, placed and finished. The banding along the driveway was formed and poured separately using a Limestone textured finish. Designed saw cuts were also placed as part of the overall design.

PROJECT DETAILS

LOCATION

Ontario, Canada

CLIENT

Patterson

INSTALL COMPLETED

July 2015

SQUARE FEET

3,000

BOMANITE SYSTEMS

Bomanite Exposed Aggregate Systems SandScape Texture

BOMANITE LICENSED CONTRACTOR

Bomanite Toronto

111 Zenway Blvd., Unit 17

Vaughan, Ontario

Canada L4H 3H9

TEL: 905-265-2500

FAX: 905-265-2504

Email: bomanite@bomanite.ca

Website: www.bomanite.ca

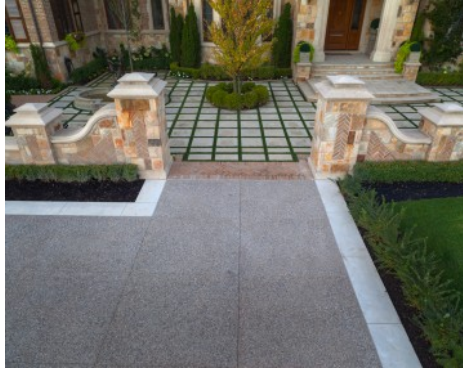
Bomanite Exposed Aggregate Systems

PROJECT PROFILE

PATTERSON RESIDENCE DRIVEWAY



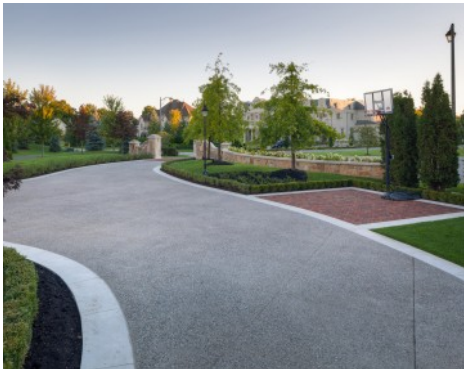
Residential Driveway - Bomanite Sandstone Texture



Residential Driveway - Bomanite Sandstone Texture



Residential Driveway - Bomanite Sandstone Texture



Residential Driveway - Bomanite Sandstone Texture



Residential Driveway - Bomanite Sandstone Texture



Residential Driveway - Bomanite Sandstone Texture



Residential Driveway - Bomanite Sandstone Texture



Residential Driveway - Bomanite Sandstone Texture