

Bomanite Exposed Aggregate Systems

PROJECT PROFILE

GARMIN EXPANSION PEDESTRIAN PLAZA



PROJECT INFORMATION

Bomanite Licensee, Musselman & Hall Contractors (M&H) worked with local architecture firm Gould Evans during the design development phase of the Garmin Expansion project. M&H assisted with the project specifications and samples. The design team and owner's representatives visited the M&H architectural concrete showroom multiple times to discuss project particulars and review samples until the team was able to fine tune the project finishes.

Musselman & Hall placed 40,800 SF pedestrian plaza as part of a building expansion project at the Garmin headquarters in Olathe, KS. Nearly 25,800 SF of the plaza was done utilizing the Bomanite Sandstone Texture Finish, Multiple planter beds, cast-in-place Sandstone finished concrete benches, a continuous 1' x 8' joint spacing, and the detailed stain pattern created unique challenges to this project.

The entire plaza was saw cut and v grooved, or bevel cut, on a 1' x 8' joint spacing, joint layout was extremely critical. The jointing was continuous throughout the 700' long plaza. Any variance in joint layout would be obvious and would not be acceptable.

M&H used Bomanite Con-Color to stain the Sandstone Texture portion of the plaza. The stain pattern incorporated three Bomanite Con-Colors; Cobblestone Gray, Nickel Gray, and Natural Gray. The stained Sandstone was then sealed with BomaSeal C-18.

This is a beautiful project and exhibits the potential and beauty of quality architectural concrete. This project won the Gold Award for the Best Bomanite Exposed Aggregate Project.

PROJECT DETAILS

LOCATION

Olathe, KS

PROJECT DESIGNER

Gould Evans

GENERAL CONTRACTOR

McCowan Gordon Construction

INSTALL COMPLETED

April 2016

SQUARE FEET

25,800

BOMANITE SYSTEMS

Bomanite Exposed Aggregate Systems - Bomanite Sandstone Texture
Bomanite Con-Color
BomaSeal C-18

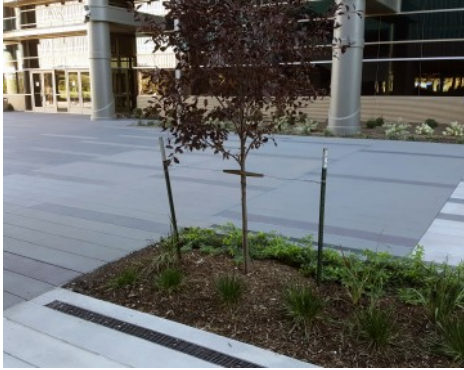
BOMANITE LICENSED CONTRACTOR

Musselman & Hall Contractors, LLC
4922 E. Blue Banks
Kansas City, MO 64130
TEL: [816-861-1234](tel:816-861-1234)
FAX: [816-861-1237](tel:816-861-1237)
Email: dkroesen@mandh.net
Website: www.musselmanandhall.com

Bomanite Exposed Aggregate Systems

PROJECT PROFILE

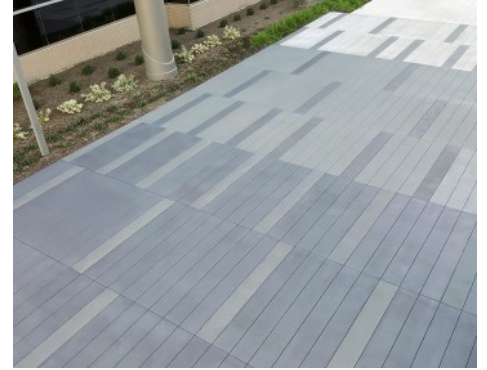
GARMIN EXPANSION PEDESTRIAN PLAZA



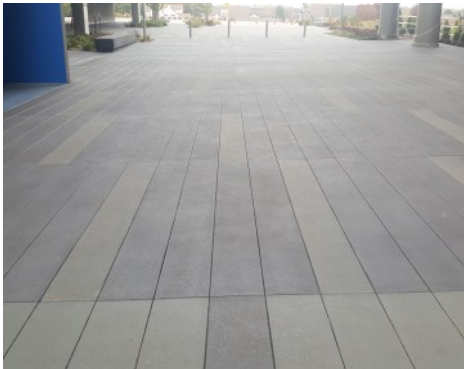
Garmin Expansion - Bomanite Sandstone Texture with Bomanite Con-Color



Garmin Expansion - Bomanite Sandstone Texture with Bomanite Con-Color



Garmin Expansion - Bomanite Sandstone Texture with Bomanite Con-Color



Garmin Expansion - Bomanite Sandstone Texture with Bomanite Con-Color



Garmin Expansion - Bomanite Sandstone Texture with Bomanite Con-Color