

Bomanite Exposed Aggregate Systems

PROJECT PROFILE

SOUTH CONGRESS HOTEL



PROJECT INFORMATION

Nestled in the heart of trendy SoCo (South Congress Avenue) in Austin, is the South Congress Hotel designed by the Austin architecture firm of [Dick Clark + Associates](#). Bomanite Licensee, [Texas Bomanite](#), joined the process in April 2013 by pricing the exterior architectural concrete working with the Houston office of Manhattan Construction from April to November to revise estimates as the project became more defined. They were awarded the work in November 2013 and the project was completed in late 2015.

Situated on nearly an acre of land, the building spans over 82,000 square feet and includes a hotel, restaurants and retail space. Texas Bomanite's role in the project included integral color concrete with Bomanite Exposed Aggregate Sandscape Texture and Sandblast paving finishes as well as board-formed concrete planter walls and water features incorporated into walkways, courtyards and outside dining venues.

The South Congress hotel was included in the "It List 2016: The Best New Hotels on the Planet," by Travel + Leisure Magazine!

PROJECT DETAILS

LOCATION
Austin, Texas

CLIENT
South Congress Hotel

PROJECT DESIGNER
Ten Eyck Landscape Architects

GENERAL CONTRACTOR
Manhattan Construction

INSTALL COMPLETED
Winter 2015

BOMANITE SYSTEMS
Bomanite Exposed Aggregate Systems - Bomanite Sandscape Texture

BOMANITE LICENSED CONTRACTOR
Texas Bomanite
11107 Morrison Lane
Dallas, TX 75229-5608
TEL: 972-484-8465
FAX: 972-484-8466
Website: www.texasbomanite.com
Email: info@texasbomanite.com

Bomanite Exposed Aggregate Systems

PROJECT PROFILE

SOUTH CONGRESS HOTEL



South Congress Hotel - Bomanite Exposed Aggregate Sandblast Finishes with concrete planter walls and water features



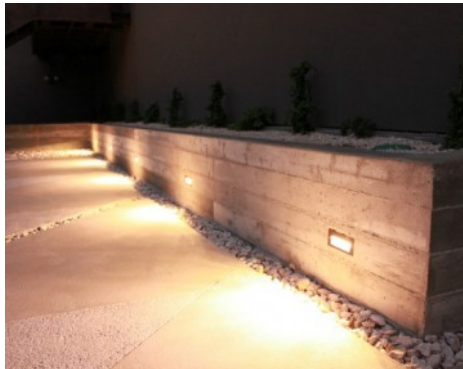
South Congress Hotel - Bomanite Exposed Aggregate Sandblast Finishes with concrete planter walls and water features



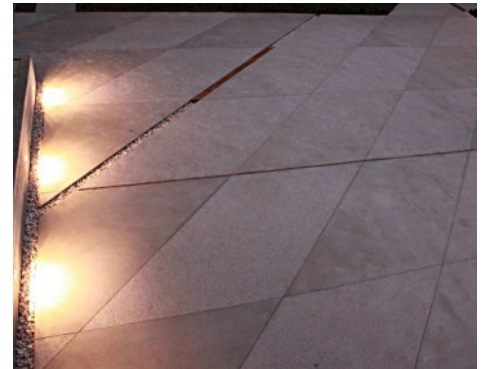
South Congress Hotel - Bomanite Exposed Aggregate Sandblast Finishes with concrete planter walls and water features



South Congress Hotel - Bomanite Exposed Aggregate Sandblast Finishes with concrete planter walls and water features



South Congress Hotel - Bomanite Exposed Aggregate Sandblast Finishes with concrete planter walls and water features



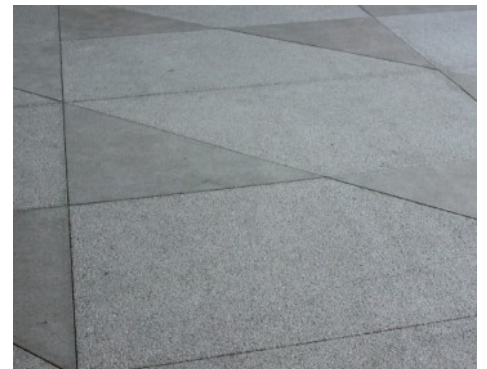
South Congress Hotel - Bomanite Exposed Aggregate Sandblast Finishes with concrete planter walls and water features



South Congress Hotel - Bomanite Exposed Aggregate Sandblast Finishes with concrete planter walls and water features



South Congress Hotel - Bomanite Exposed Aggregate Sandblast Finishes with concrete planter walls and water features



South Congress Hotel - Bomanite Exposed Aggregate Sandblast Finishes with concrete planter walls and water features

Bomanite Exposed Aggregate Systems

PROJECT PROFILE

SOUTH CONGRESS HOTEL



South Congress Hotel - Bomanite Exposed Aggregate Sandscape Texture and Sandblast Finishes with concrete planter walls and water features



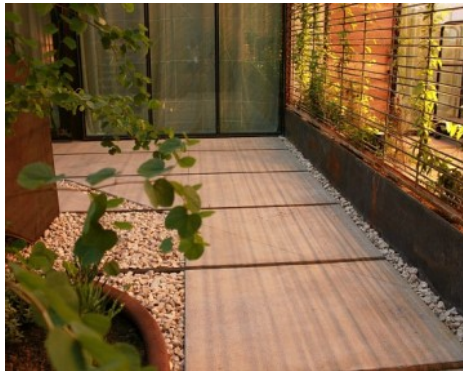
South Congress Hotel - Bomanite Exposed Aggregate Sandscape Texture and Sandblast Finishes with concrete planter walls and water features



South Congress Hotel - Bomanite Exposed Aggregate Sandscape Texture and Sandblast Finishes with concrete planter walls and water features



South Congress Hotel - Bomanite Exposed Aggregate Sandscape Texture and Sandblast Finishes with concrete planter walls and water features



South Congress Hotel - Bomanite Exposed Aggregate Sandscape Texture and Sandblast Finishes with concrete planter walls and water feature



South Congress Hotel - Bomanite Exposed Aggregate Sandscape Texture and Sandblast Finishes with concrete planter walls and water features



South Congress Hotel - Bomanite Exposed Aggregate Sandscape Texture and Sandblast Finishes with concrete planter walls and water features



South Congress Hotel - Bomanite Exposed Aggregate Sandscape Texture and Sandblast Finishes with concrete planter walls and water features



South Congress Hotel - Bomanite Exposed Aggregate Sandscape Texture and Sandblast Finishes with concrete planter walls and water features