

## Bomanite Exposed Aggregate Systems

### PROJECT PROFILE

#### 50 FIFTY DTC OFFICE BUILDING



### PROJECT INFORMATION

50 Fifty DTC is a unique tower that contains a six-story office building above eight levels of parking (two underground) in the Denver Tech Center of Colorado. The area is known for its typical suburban office complex featuring buildings set among a sea of asphalt parking lots and expansive lawns. With the densification of the area the client wanted something different and design inspired by nautical nuances. The office building's design was driven by a desire to express a strong sense of style on a highly visible property. Every material selected for the construction of 50 FIFTY was considered with only quality and performance in mind. From the handpicked granite to local artwork adorning the hallways, there were no short cuts taken, only design excellence.

The 50 Fifty DTC office building employs floor-to-ceiling performance glass, and strategically placed light wells to both maximize site effectiveness and promote workplace wellness and sustainable design. 100% covered, secured parking at 3.5 spaces per 1,000 SF, Common Conference Room, Collaborative Lounge and Work Space Areas, State-of-the-Art Fitness Center, Secure Bicycle Storage & Mechanics Station, all with expansive views and high-end finishes appeal to companies who want the amenities and style of an urban location.

Bomanite Licensee, [Colorado Hardscapes](#)' scope of work was concentrated on the building's grand porte-cochère. Tucked beneath a series of V-shaped structural members, the design creates a dramatic entry and is intricately articulated with lighting both above and below to resemble the motion of waves lapping against a vessel. Guests are greeted with a direct view into the marble-lined lobby through the elegant interior glass curtains. An adjacent terrace offers a semi-private garden level space.

The architects plan called for [Bomanite's SandScape Refined Exposed Aggregate System](#), using a white Color Hardener and combining locally-sourced aggregates with crushed mirror glass to resemble the sun reflecting off the water for the curbs and walkways. The design called for a great deal of precision related to saw cuts both as joints and aesthetic elements. Saw-cut joints radiate toward the building in diverging rays and special, radius-cut joints were fit-out with illumination to mimic the undulating LED lights integrated overhead. Recognizing the difficulties with delivering a uniform finish with the Bomanite SandScape Refined System on complex, curved, and multi-level surfaces, Colorado Hardscapes worked to address this challenge with additional technical training and multiple testing to produce the expected quality and hi-end result. The detailed walkways and curbs seamlessly match the interior décor which contrasts against the dark-grey Integrally Colored concrete broom finished drive lanes, creating a black-tie luxury experience.

Bomanite SandScape Refined is an architectural exposed concrete with a very fine exposure depth. The SandScape Refined System utilizes specialized concrete mix designs, dry shake color hardener and/or integral color, topical treatments and advanced application procedures to produce a finished product that showcases the fine aggregate. The final product is a unique alternate to other decorative concrete finishes that produces a monolithic concrete slab with a low life cycle cost due to the pre-aged nature of the surface. Bomanite SandScape Refined is suited for exterior applications both new construction and major renovation projects. Bomanite SandScape Refined is a perfect choice anywhere that improved wear resistance for light- to moderate-duty vehicular or foot traffic combined with an architectural finish is necessary. Due to the use of Bomanite Color Hardener, these highly durable surfaces are available in a multitude of colors, including cost effective light-reflective formulations that may not require the use of white cement to reduce heat island effect.

This Nautical themed office complex with its floor-to-ceiling glass, natural light that fills every office and core space, environmentally friendly products, water saving landscape design, creates an extremely energy efficient building. The sustainable design, materials and construction allow 50 Fifty to seek LEED Gold certification with this stunning sophisticated design.

Colorado Hardscapes won the 2018 Best Bomanite Exposed Aggregate System Silver Award for their precision and technical installation.

### PROJECT DETAILS

#### LOCATION

Denver, CO

#### ARCHITECT

Civitas (Landscape Design)

#### GENERAL CONTRACTOR

Hensel Phelps

#### INSTALL COMPLETED

October 2018

#### SQUARE FEET

11,000

#### BOMANITE SYSTEMS

Bomanite Exposed Aggregate Systems - SandScape Refined

#### BOMANITE LICENSED CONTRACTOR

Colorado Hardscapes, Inc.  
9000 E Chenango Ave. Suite 200  
Greenwood Village, CO 80111  
TEL: 303-750-8200  
FAX: 303-750-8886  
Email: [info@coloradohardscapes.com](mailto:info@coloradohardscapes.com)  
Website: [www.coloradohardscapes.com](http://www.coloradohardscapes.com)

# Bomanite Exposed Aggregate Systems

## PROJECT PROFILE

### 50 FIFTY DTC OFFICE BUILDING



50 Fifty DTC Building - Denver, CO - Bomanite Exposed Aggregate Sandstone Refined System Walkways and Curbs



50 Fifty DTC Building - Denver, CO - Bomanite Exposed Aggregate Sandstone Refined System Walkways and Curbs



50 Fifty DTC Building - Denver, CO - Bomanite Exposed Aggregate Sandstone Refined System Walkways and Curbs



50 Fifty DTC Building - Denver, CO - Bomanite Exposed Aggregate Sandstone Refined System Walkways and Curbs



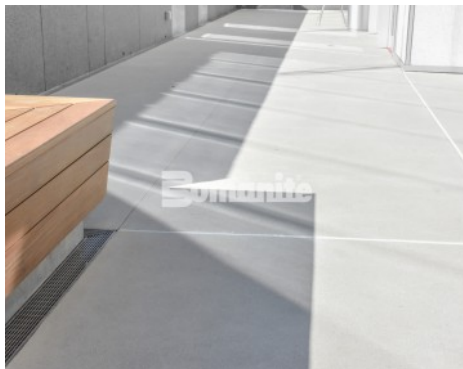
50 Fifty DTC Building - Denver, CO - Bomanite Exposed Aggregate Sandstone Refined System Walkways and Curbs



50 Fifty DTC Building - Denver, CO - Bomanite Exposed Aggregate Sandstone Refined System Walkways and Curbs



50 Fifty DTC Building - Denver, CO - Bomanite Exposed Aggregate Sandstone Refined System Walkways and Curbs



50 Fifty DTC Building - Denver, CO - Bomanite Exposed Aggregate Sandstone Refined System Walkways and Curbs



50 Fifty DTC Building - Denver, CO - Bomanite Exposed Aggregate Sandstone Refined System Walkways and Curbs

# Bomanite Exposed Aggregate Systems

## PROJECT PROFILE

50 FIFTY DTC OFFICE BUILDING



50 Fifty DTC Building - Denver, CO - Bomanite Exposed Aggregate Sandstone Refined System Walkways and Curbs



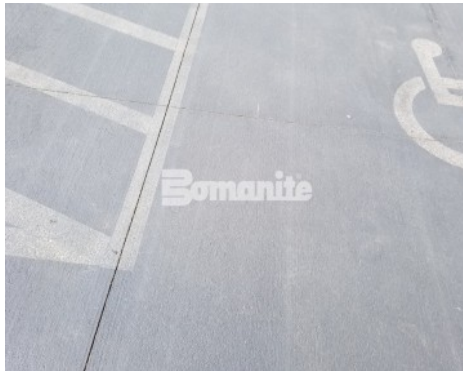
50 Fifty DTC Building - Denver, CO - Bomanite Exposed Aggregate Sandstone Refined System Walkways and Curbs



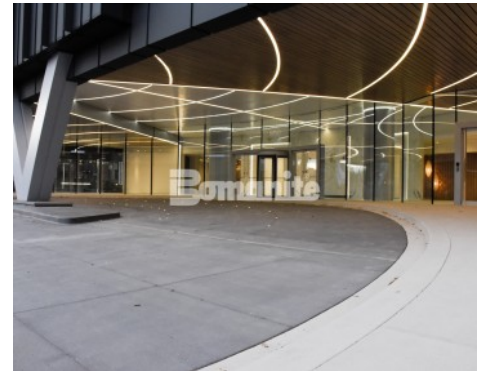
50 Fifty DTC Building - Denver, CO - Bomanite Exposed Aggregate Sandstone Refined System Walkways and Curbs



50 Fifty DTC Building - Denver, CO - Bomanite Exposed Aggregate Sandstone Refined System Walkways and Curbs



50 Fifty DTC Building - Denver, CO - Bomanite Exposed Aggregate Sandstone Refined System Walkways and Curbs



50 Fifty DTC Building - Denver, CO - Bomanite Exposed Aggregate Sandstone Refined System Walkways and Curbs