

## Bomanite Custom Polishing Systems

### PROJECT PROFILE

#### GRAIN VALLEY HIGH SCHOOL (MODENA SL)



### PROJECT INFORMATION

With school out for the summer that leaves room for designers and contractors to have more readily available access for specified improvements and upgrades. Growing School Districts looking to restyle, update or renovate can trust the Bomanite Modena SL system for low maintenance and cost saving benefits. The Grain Valley High School originally built in the late 1990s finished its phase 4 expansion to accommodate its rapidly growing student body. Expansion brought much needed instructional and collaboration space, a game changer for students. With a large amount of community support, the School took into consideration the need to provide a low maintenance flooring with an element of design to embody the school's colors and team spirit.

Hollis + Miller Architects worked with Bomanite Decorative Concrete Licensee, **Musselman & Hall Contractors, LLC** on several other past projects and knew that they could come up with a custom winning design. They searched through a number of samples, library binders, created idea boards and pulled together a combination of polished concrete and different aggregates that would give the students academia pride in their newly expanded school.

Phase 4 creates a new main entrance, media center, lecture hall, administration area, and courtyard for student use. The new entrance to the "Eagle Way" promenade is flanked by a huge monolithic concrete wall dressed out in the school colors of royal blue and white. The entrance's 2,890 sq. ft. hallway contains two shades of vibrant blue glass aggregate and eye-catching pieces of sparkling mirror glass polished to a brilliant luster. After the concrete base slab was poured, it was topped with a two-inch thick Bomanite Modena SL topping slab, aggregates added and after a brief curing period the floor was then polished to the perfect grit and shine.

Additionally, included in the project were 1,945 sq. ft. of a refined "cream polish" surface (Class A aggregate exposure with a Level 3 polish) and 4,335 sq. ft. of a perfect "salt and pepper" finish (Class B aggregate exposure with a Level 3 polish). Musselman & Hall crews also polished three sets of concrete steps with a three-line nose detail engraved into the concrete. The newly created grooves were filled with "Grain Valley Blue" epoxy to bring some school spirit and color into the Bomanite cream polished finish designed surface areas.

**The Bomanite Modena SL Custom Polishing System** is an engineered interior cementitious topping that is blended with selected aggregates and then ground and polished to the desired gloss level. The Modena system transforms existing or worn surfaces into beautiful walkways, school hallways, showrooms, restaurants and lobbies and is available in a range of colors and patterns using decorative sawcuts. Additional topically applied stains and a variety of aggregates, such as recycled glass or porcelain along with regionally sourced materials, are all options in creating a beautifully designed, environmentally friendly and functional floor. The Modena system is a low-cost alternative for renovation projects and provides the durability and strength for this exceptionally long lifespan system. With the industry's lowest lifecycle costs, low to zero VOC and minimal maintenance requirements, Modena by Bomanite Polished Concrete was the optimal choice for Grain Valley's expansion and renovations.

Musselman & Hall Contractors, LLC received several awards for their exceptional work at Grain Valley High School. They were awarded the **Bomanite Outstanding Grand Award** as well as the **Bomanite Custom Polishing Systems Gold Award**.

### PROJECT DETAILS

#### LOCATION

Grain Valley, MO

#### CLIENT

Grain Valley R-5 School District

#### ARCHITECT

Hollis + Miller Architects

#### GENERAL CONTRACTOR

McCown-Gordon

#### INSTALL COMPLETED

September 2019

#### SQUARE FEET

9,170

#### BOMANITE SYSTEMS

Bomanite Custom Polishing Systems - Modena SL

#### BOMANITE PRODUCTS

Blue and Mirror Glass Aggregates

#### BOMANITE LICENSED CONTRACTOR

Musselman & Hall Contractors, LLC

4922 E. Blue Banks

Kansas City, MO 64130

TEL: 816-861-1234

FAX: 816-861-1237

Email: [dkroesen@musselmanandhall.com](mailto:dkroesen@musselmanandhall.com)

Website: [www.musselmanandhall.com](http://www.musselmanandhall.com)

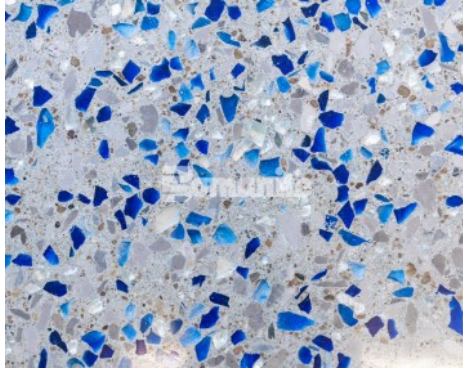
# Bomanite Custom Polishing Systems

## PROJECT PROFILE

### GRAIN VALLEY HIGH SCHOOL (MODENA SL)



Grain Valley High School Renovation - Bomanite Custom Polishing Modena SL Interior Hallway



Grain Valley High School - Bomanite Custom Polishing Modena SL Interior Floor Blue and Mirror Glass Aggregate Mix



Grain Valley High School Renovation - Bomanite Custom Polishing Modena SL with Epoxy filled stair treads



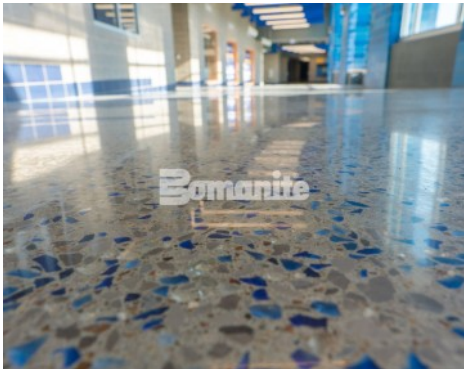
Grain Valley High School Renovation - Bomanite Custom Polishing Modena SL Interior Hallway with Cream Polish Salt and Pepper Aggregates



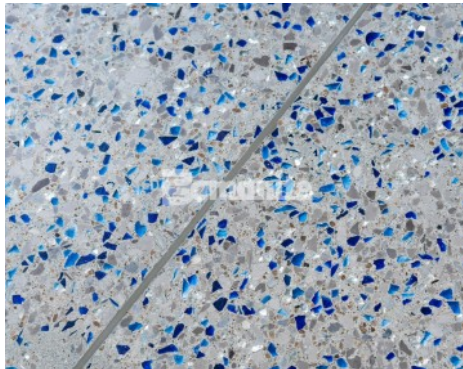
Grain Valley High School Renovation - Bomanite Custom Polishing Modena SL Interior Hallway with Cream Polish Salt and Pepper Aggregates



Grain Valley High School Renovation - Bomanite Custom Polishing Modena SL Interior Hallway



Grain Valley High School - Bomanite Custom Polishing Modena SL Interior Floor Blue and Mirror Glass Aggregate Mix



Grain Valley High School - Bomanite Custom Polishing Modena SL Interior Floor Blue and Mirror Glass Aggregate Mix



Grain Valley High School - Bomanite Custom Polishing Modena SL with Epoxy filled stair treads