

Bomanite Imprint Systems

PROJECT PROFILE

RESIDENCE CONDOMINIUMS (IMPRINT WITH SANDSCAPE FINISH)



PROJECT INFORMATION

The Residence Condominiums is a full-service hi-rise housing development located in Clayton, Mo that offers a 24-hour doorman, beautiful common spaces, guest suites, heated secure garage for those winter months, a large inviting swimming pool and private party room for some of their amenities. A top selling feature is the location, walkable to downtown that has a collection of boutiques, galleries, hotels and restaurants known throughout the region.

The condominium ownership approached Bomanite Licensee, [Musselman & Hall Contractors, LLC](#) about updating and replacing their aging pavement at the front entrance driveway. The object was to source a product that would be low-maintenance and have longevity. After meeting with the Board Members, reviewing sample products and systems a plan of action was decided. A Bomanite Imprinted Concrete Pattern with an Exposed Aggregate Finish was chosen for style and functionality. Musselman & Hall Contractors replaced the vehicular portion with 6" concrete pavement integrally colored with Bomanite Light Copper. The 3,750 square foot area was imprinted with the [Bomacron English Sidewalk Slate](#) stamp and given a light exposed [Bomanite Sandscape Texture](#) finish to complete the sophisticated parking pavement design. The stamped pattern with exposed aggregate Sandscape finish was chosen due to the nature that a pre-worn finish would not show the wear from traffic nor need constant resealing to look fresh.

Along with the parking area Musselman & Hall Contractors also replaced 1,700 square feet of the entry sidewalk that leads to the main entrance for a chic complementary transition. Bomanite Cafe Au Lait Integral Color was chosen for the concrete bands and Bomanite Franciscan Red Color Hardener for the expanse of the walkway to correspond with the existing brick exterior colors. [The Bomacron Slate Texture imprint](#) with hand tooled joints for precision of placement of design were used throughout the space. The main walkway now boasts a sleek updated pathway for guests and homeowners.

The Bomanite Exposed Aggregate line of products and systems have a built-in long-life span as well as the long standing [Bomanite Imprint Systems](#), both known for their robust durability. Bomanite Sandscape Texture is the product of choice for projects requiring a decorative and durable finish alternative to traditional concrete paving that provides an increased surface and slip resistance benefit. The natural non-skid properties and abrasion resistant aggregates make Bomanite Sandscape Texture the perfect choice for all residential and commercial exterior concrete applications including entries, municipal or public works projects, hospitals, educational facilities, museums, pool decks, plazas and more. Combined with the Bomanite Imprint Systems, the Bomanite Sandscape Texture finish is a robust, sustainable option where low maintenance, slip resistance and a decorative concrete surface is desired; delivering the best of both Bomanite Decorative Concrete products and systems!

Musselman & Hall Contractors, LLC showcased their creativity, quality and craftsmanship with the installation of the Residence Condominiums driveway and entryway earning them the GOLD Award for the Best Bomanite Imprint Systems Project.

PROJECT DETAILS

LOCATION

Clayton, MO

CLIENT

Residence Condominiums Board

INSTALL COMPLETED

October 2019

SQUARE FEET

Driveway and Parking 3,750 SF, Sidewalk 1,700 SF

BOMANITE SYSTEMS

Driveway: Bomanite Imprinted Systems - Bomacron English Sidewalk Slate Pattern with Bomanite Exposed Aggregate Sandscape Texture Finish; Sidewalk: Bomacron Slate Texture

BOMANITE PRODUCTS

Bomanite Color Hardener, Bomanite Integral Color

BOMANITE LICENSED CONTRACTOR

Musselman & Hall Contractors, LLC

4922 E. Blue Banks

Kansas City, MO 64130

TEL: [816-861-1234](tel:816-861-1234)

FAX: 816-861-1237

Email: dkroesen@musselmanandhall.com

Website: www.musselmanandhall.com

Bomanite Imprint Systems

PROJECT PROFILE

RESIDENCE CONDOMINIUMS (IMPRINT WITH SANDSCAPE FINISH)



Residence Condominiums - Bomanite Imprinted Concrete System with Bomanite Exposed Aggregate Sandstone Texture Finish Driveway; Bomacron Slate Texture with Hand Tool Joints Sidewalk



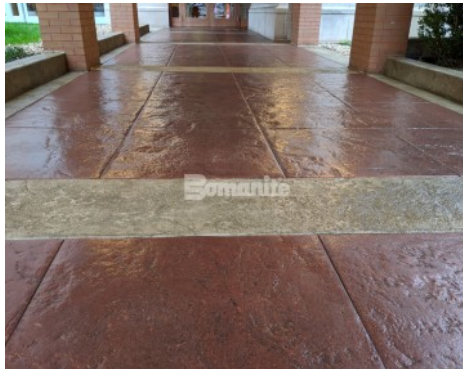
Residence Condominiums - Bomanite Imprinted Concrete English Sidewalk Slate Pattern with Bomanite Exposed Aggregate Sandstone Texture Finish



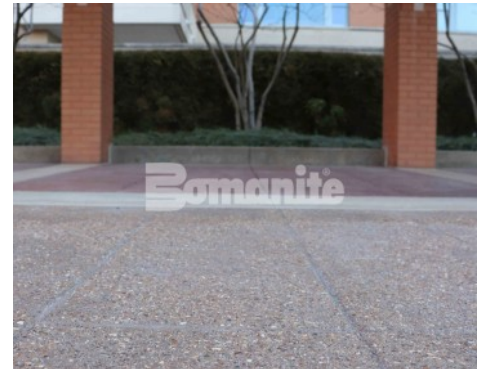
Residence Condominiums - Bomanite Imprinted Concrete System Bomacron Slate Texture with Hand Tool Joints Sidewalk



Residence Condominiums - Bomanite Imprinted Concrete System Bomacron Slate Texture with Hand Tool Joints Sidewalk



Residence Condominiums - Bomanite Imprinted Concrete System Bomacron Slate Texture with Hand Tool Joints Sidewalk



Residence Condominiums - Bomanite Imprinted Concrete System with Bomanite Exposed Aggregate Sandstone texture Finish



Residence Condominiums - Bomanite Imprinted Concrete System with Bomanite Exposed Aggregate Sandstone Texture Finish Driveway; Bomacron Slate Texture with Hand Tool Joints Sidewalk