

Bomanite Exposed Aggregate Systems

PROJECT PROFILE

CHOCTAW CULTURAL CENTER AND MUSEUM



PROJECT INFORMATION

The [Choctaw Cultural Center](#) in Durant, Oklahoma is dedicated to preserving and perpetuating Choctaw culture and history through exhibitions and programs. The newly finished cultural center is over 100,000 square feet and houses two exhibit halls, a Permanent Exhibit Hall: A four-part story focusing on the history of the Choctaw tribe from ancestral times (circa 1250) to current day in Oklahoma; and a Temporary Exhibit Hall: For traveling exhibits, community curated exhibits and special events throughout the year. Also included is an art gallery, auditorium, Children's Luksi (turtle) activity center, state-of-the-art classrooms, offices, the Champuli Restaurant and Hvshi Gift Store. The surrounding site incorporates a stickball field, living village and a traditional mound.

[Bomanite of Tulsa, Inc.](#) had the pleasure of working with the [Choctaw Nation of Oklahoma](#) as well as architects, [JCJ Architecture](#) to bring to life the art and design for the interior entrance flooring of the new facility. The architects crafted textures and patterns with intention and local sourced materials. Following a journey through 14,000 years and over hundreds of miles, immersive exhibits convey each component of the Choctaw story through authentic and historically accurate landscapes, pictures, artwork and artifacts.

Throughout the Choctaw Cultural Center, small design details are placed that reflect the [Choctaw culture](#). For example, the diamond is an important symbol to the Chahta people and often represents the Eastern Diamondback Rattlesnake. The diamond pattern is replicated in the decorative concrete pathway that sits between the hardwood and stone flooring. The project was unusual for Bomanite of Tulsa as in working with the designer's intent the chosen [Bomanite Exposed Aggregate System](#) Revealed and Bomanite SandScape Texture are traditionally exterior applications, however the clients truly desired the exposed look with bright native American colors to go with the additional rustic flooring materials for the interior space. [Bomanite Revealed](#) is a sustainable finishing option that incorporates a unique binder and color blending process with specialty aggregates that works for projects requiring a highly decorative and durable finish. The Bomanite Revealed with solid glass aggregates in white, black, red and yellow was selected for the vibrant diamond border as well as the circle surrounding the firepit.

Once the newly poured concrete base slab was readied and hardwood flooring and stone accent flooring were installed, Bomanite of Tulsa had to make sure the Bomanite Exposed Aggregate Systems were level with the existing surfaces. The need was met by building up the area by 1 inch to 1 ½ inches. Providing a technically challenging project, a bonded application for both systems were used. Expansion joints had to run through the borders as well as be incorporated in the diamond pattern, brass divider strips were used to set apart the different colors of glass aggregates. The [Bomanite SandScape Texture](#) in Autumn Brown utilizes specialized concrete mix designs containing select sands and aggregates was the choice for the pathway between the stonework. Matching the SandScape color to the stone provided for a cohesive design. The natural non-skid properties and abrasion resistant aggregates make both Bomanite Revealed and Bomanite SandScape Texture the perfect choice for entries, municipal or public works projects, hospitals, educational facilities, museums, pool decks, plazas and more.

The Choctaw Cultural Center offers visitors a truly unique experience with textural variation and distinct decorative detail. With the Bomanite Decorative Concrete Systems a variety of modernized mixes and an unlimited palette of colors, textures and locally sourced aggregate options are available to choose from, providing cost-effective solutions that are more durable than ever for that creative artistic expression.

Bomanite of Tulsa, Inc. Tulsa OK, received the Best Bomanite Exposed Aggregate Systems Project GOLD AWARD for their brilliant work on the Choctaw Cultural Center and Museum. The Choctaw Cultural Center welcomes all visitors to explore the rich history, culture, and experiences of the Choctaw Nation of Oklahoma and its community and now have a rich and beautiful Bomanite Decorative Concrete Interior entry area.

PROJECT DETAILS

LOCATION

Durant, OK

CLIENT

Choctaw Nation of Oklahoma

ARCHITECT

JCJ Architecture

GENERAL CONTRACTOR

Manhattan Construction

INSTALL COMPLETED

Dec 2019

SQUARE FEET

1,450

BOMANITE SYSTEMS

Bomanite Exposed Aggregate Systems; Bomanite Revealed, Bomanite SandScape Texture

BOMANITE LICENSED CONTRACTOR

Bomanite of Tulsa, Inc.

P.O. Box 471189

Tulsa, OK 74147

TEL: 918-744-6272

FAX: 918-744-8470

Website: www.bomaniteoftulsa.com

Email: charles@bomaniteoftulsa.com

Bomanite Exposed Aggregate Systems

PROJECT PROFILE

CHOCTAW CULTURAL CENTER AND MUSEUM



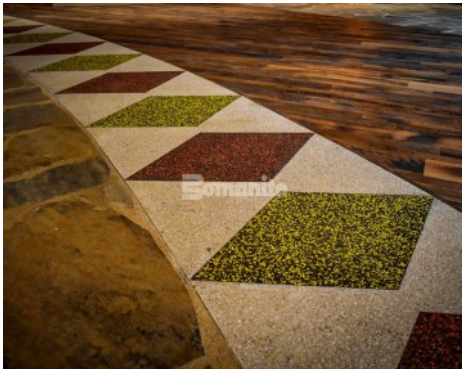
Choctaw Cultural Center - Bomanite Revealed Diamond Border with Hardwood and Stone Flooring



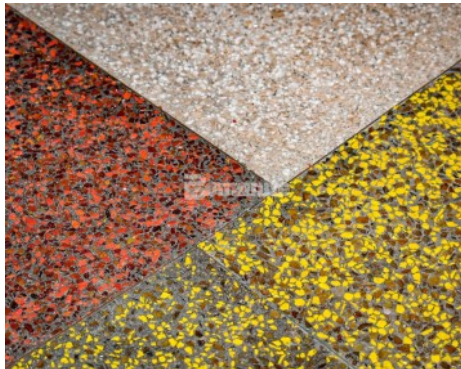
Choctaw Cultural Center - Bomanite Revealed Glass Aggregates in White, Black, Red and Yellow



Choctaw Cultural Center - Bomanite Revealed Circle Surround Firepit



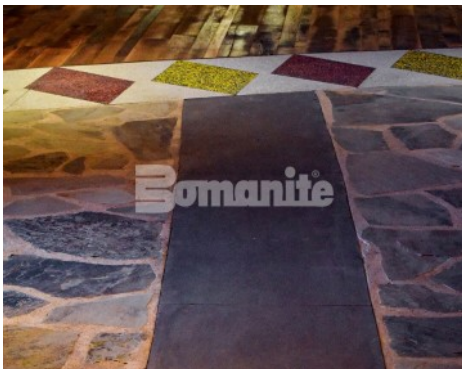
Choctaw Cultural Center - Bomanite Revealed Diamond Designed Border



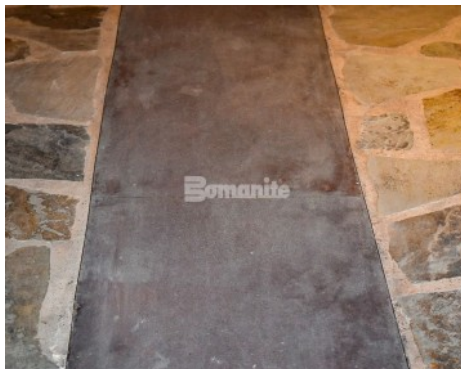
Choctaw Cultural Center - Bomanite Revealed with Glass Aggregates



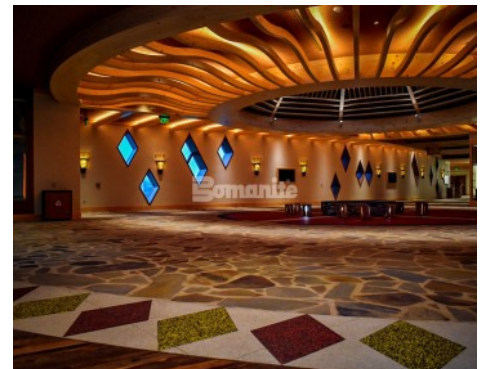
Choctaw Cultural Center - Bomanite Revealed



Choctaw Cultural Center - Bomanite Sandstone Texture Pathway and Bomanite Revealed Diamond Border



Choctaw Cultural Center - Bomanite Sandstone Texture Pathway



Choctaw Cultural Center - Bomanite Revealed Diamond Border with Hardwood and Stone Flooring