

Bomanite Imprint Systems

PROJECT PROFILE

CHARLES SCHWAB RETAIL AND CONFERENCE CENTER



PROJECT INFORMATION

Located in Lone Tree, Colorado, the [Charles Schwab Lone Tree Campus](#) phase #3 project started coming out of the ground in 2018 with a new 45,000 square foot retail space and 5 story parking structure. [Mortenson Construction](#) contracted with Bomanite Licensee, Colorado Hardscapes to install the specified Bomanite stamped concrete designed for the main entry into the retail and conference building and surrounding drive areas. Colorado Hardscapes worked with Schwab's designers and [Davis Partnership Architects](#) to select the [Bomacron English Sidewalk Slate pattern](#) with natural gray colors.

Added to the design was a 17' wide section walkway of [Bomanite Exposed Aggregate System Sandscape Texture](#) that utilizes specialized mix designs, additives and topical treatments that can incorporate unique colored sands or aggregates. The thoroughfare was encapsulated with a 6" perimeter band of broom finished concrete that leads from the sidewalk straight to the [conference center's](#) door. Detail was taken to match the saw cut joints in the Sandscape installation to the building's interior flooring tile layout for a continuous flow from the exterior to the interior space.

The exterior paving showcases a marked handicap parking lot and accommodates a fire lane access where the concrete was poured 7" thick with rebar reinforcement. In total, 9,625 sq. ft. of Bomanite stamped concrete and 1,740 sq. ft. of Bomanite Sandscape Texture Systems were installed for not only the distinct and stunning design detail but for long-term durability and low maintenance attributes. Using a combination of imprinted concrete and exposed aggregate creates a cohesive and complementary decorative concrete element to the exterior space and design of the building.

Through many discussions with Mortenson, [Colorado Hardscapes](#) became their go-to contractor to help with other parts of the project. Along with the installation of the exterior hardscape, Colorado Hardscapes was contracted to install decorative saw cuts at two parking garage levels and asked to help remedy two board formed walls that when poured (by others) did not pass Mortenson's standards.

[Bomanite Topping Systems Micro-Top ST](#) was selected to be the new finish on the walls. Bomanite Micro-Top ST is a two-part, polymer-modified cementitious coating that has excellent adhesion and weather resistance when applied to correctly prepared and primed surfaces. Colorado Hardscapes' crews spent many hours grinding and patching the existing walls to get them smooth enough to apply the Bomanite Micro-Top ST. The two feature walls now accent the exterior finishes on the building and provide a smooth and sleek appearance.

The [Bomanite stamped concrete](#), Bomanite Sandscape Texture, and Bomanite Micro-Top ST turned out beautiful and earned Colorado Hardscapes the 2020 Best Bomanite Toppings Systems Project Silver Award. Using readily available multiple Bomanite products to provide great solutions for the General Contractor, Architect and client is what makes [Colorado Hardscapes](#) an astounding partner for any design project.

PROJECT DETAILS

LOCATION

Lone Tree, CO

CLIENT

Charles Schwab

PROJECT DESIGNER

Davis Partnership Architects

GENERAL CONTRACTOR

Mortenson Construction

INSTALL COMPLETED

10/2019

SQUARE FEET

10,990

BOMANITE SYSTEMS

Bomanite Imprint Systems - Bomacron English Sidewalk Slate Pattern; Bomanite Exposed Aggregate Systems - Sandscape Texture; Bomanite Toppings Systems - Micro-Top ST

BOMANITE LICENSED CONTRACTOR

Colorado Hardscapes, Inc.

9000 E Chenango Ave. Suite 200

Greenwood Village, CO 80111

TEL: 303-750-8200

FAX: 303-750-8886

Email: info@coloradohardscapes.com

Website: www.coloradohardscapes.com

Bomanite Imprint Systems

PROJECT PROFILE

CHARLES SCHWAB RETAIL AND CONFERENCE CENTER



Charles Schwab Retail and Conference Center Lone Tree Campus - Bomanite Sandstone Texture with Saw Cuts and Bomacron English Sidewalk Slate Stamped Concrete Pattern



Charles Schwab Retail and Conference Center Lone Tree Campus - Bomanite Sandstone Texture with Saw Cuts and Bomacron English Sidewalk Slate Stamped Concrete Pattern



Charles Schwab Retail and Conference Center Lone Tree Campus - Bomanite Sandstone Texture with Saw Cuts and Bomacron English Sidewalk Slate Stamped Concrete Pattern



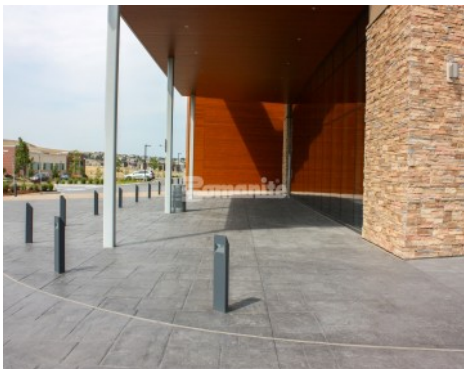
Charles Schwab Retail and Conference Center Lone Tree Campus - Bomanite Sandstone Texture Walkway with Saw Cuts



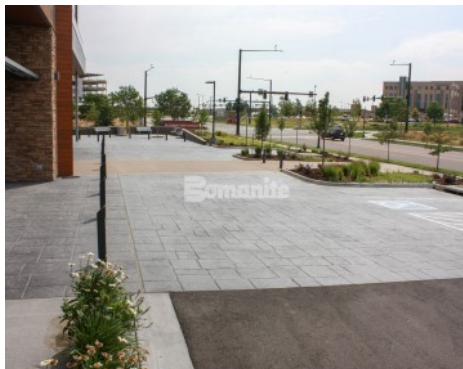
Charles Schwab Retail and Conference Center Lone Tree Campus - Bomanite Sandstone Texture with Saw Cuts and Bomacron English Sidewalk Slate Stamped Concrete Pattern



Charles Schwab Retail and Conference Center Lone Tree Campus - Bomacron English Sidewalk Slate Stamped Concrete Pattern



Charles Schwab Retail and Conference Center Lone Tree Campus - Bomacron English Sidewalk Slate Stamped Concrete Pattern



Charles Schwab Retail and Conference Center Lone Tree Campus - Bomanite Sandstone Texture with Saw Cuts and Bomacron English Sidewalk Slate Stamped Concrete Pattern



Charles Schwab Retail and Conference Center Lone Tree Campus - Bomacron English Sidewalk Slate Stamped Concrete Pattern

Bomanite Imprint Systems

PROJECT PROFILE

CHARLES SCHWAB RETAIL AND CONFERENCE CENTER



Charles Schwab Retail and Conference Center Lone Tree Campus - Bomacron English Sidewalk Slate Stamped Concrete Pattern



Charles Schwab Retail and Conference Center Lone Tree Campus - Bomanite Toppings Systems Micro-Top ST Board Formed Walls