

PROJECT PROFILE

CHAMBERLAIN ELEMENTARY



PROJECT INFORMATION

Connecticut Bomanite Systems, as part of a \$55 million renovation at Chamberlain Elementary in New Britain, CT, was contracted by the main contractor, Mather Construction, to build two front entries, three patios, and a stepped seating area, all in decorative concrete. The architect at Kaestle Boos Associates, Inc., had a firm idea of what he wanted as the final outcome. He wanted a "plank" layout, and based on that, Connecticut Bomanite guided him towards Bomanite Exposed Aggregate Systems using Bomanite SandScape® Texture. To achieve the plank layout, Connecticut Bomanite made the control sawcut layout 10' by 10' and the remainder of the sawcuts were decorative. The "planks" were colored with Walnut Bomanite ConColor. The surrounding decorative concrete used Bomanite Integral color Travertine Beige. Where an alternate to a conventional concrete finish is required, Bomanite SandScape® Texture is designed for outdoor applications. Bomanite SandScape® Texture resembles very evenly sand blasted concrete and can incorporate specialized colored sands and/or aggregates exceeding 3/8" diameter, utilizing specialized mix designs, additives, topical treatments, and advanced application procedures. The finish is an economical alternate to other decorative concrete finishes while producing a monolithic concrete slab at low life-cycle cost due to the pre-aged nature of the surface. Used in combination with a variety of color and staining options, Bomanite SandScape® Texture creates consistent texture and durable hardscapes and are available in a multitude of standard and custom options, including light-reflective formulations that reduce heat island effect.

PROJECT DETAILS

LOCATION

New Britain, CT

CLIENT

Chamberlain Elementary

ARCHITECT

Kaestle Boos Associates, Inc.

GENERAL CONTRACTOR

Mather Construction

INSTALL COMPLETED

September 2022

SQUARE FEET

5800

BOMANITE SYSTEMS

Bomanite Exposed Aggregate Systems - SandScape® Texture

BOMANITE LICENSED CONTRACTOR

Connecticut Bomanite Systems

17A Trowbridge Drive

Bethel, CT 06801

TEL: 203-778-5719

FAX: 203-778-5242

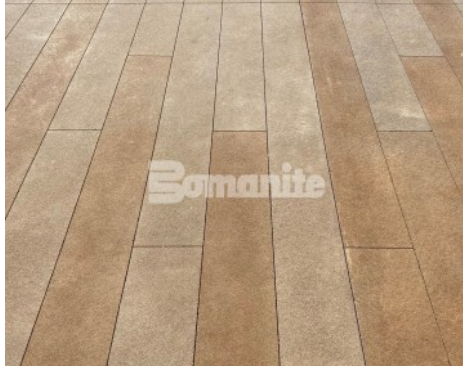
Email: peter@ctbomanite.com

Website: connecticutbomanite.bomanitelicensee.com

PROJECT PROFILE
CHAMBERLAIN ELEMENTARY



Chamberlain Elementary - Exposed - Sandscape - Connecticut Bomanite



Chamberlain Elementary - Exposed - Sandscape - Connecticut Bomanite



Chamberlain Elementary - Exposed - Sandscape - Connecticut Bomanite



Chamberlain Elementary - Exposed - Sandscape - Connecticut Bomanite



Chamberlain Elementary - Exposed - Sandscape - Connecticut Bomanite



Chamberlain Elementary - Exposed - Sandscape - Connecticut Bomanite