

Bomanite®

CUSTOM POLISHING SYSTEMS



PROJECT PROFILE

Dallas City Performance Hall

The exclusive technology behind Bomanite Custom Polishing Systems, paired with our long-established licensed installation network, delivers the industry's best concrete flooring systems. The Bomanite Custom Polishing products are formulated to produce highly architectural floors with long lasting results. Bomanite Custom Polishing licensees are trained and knowledgeable in all types of architectural concrete installations including the correct procedures for slab construction needed for quality polished concrete flooring. When you select a Bomanite Custom Polishing System you are specifying the finished flooring surface from initial consultation through construction to owner occupation and beyond.

Bomanite Custom Polishing System: **VitraFlor**



PROJECT STATISTICS

Project Name:
Dallas City Performance Hall

Location: Dallas, TX

Client: City of Dallas

Architect/Designer:
Skidmore, Owings & Merrill, LLP
and Corgan Associates, Inc.

Nature of Business: Provide low-maintenance, highly durable flooring

Install Completed: 2012

Approx. Square Feet: 10,700

Bomanite System: VitraFlor

Bomanite Licensee:
Texas Bomanite
11107 Morrison Lane
Dallas, TX 75229-5608
TEL: 972-484-8465
FAX: 972-484-8466
Website: www.texasbomanite.com
Email: info@texasbomanite.com

DOWNLOAD: PROJECT PROFILE

The award winning Dallas City Performance Hall opened its doors in September 2012 to display the city's artistic and cultural diversity. Bomanite Licensee, Texas Bomanite was chosen to provide the lobby and common areas with over 10,700 sq ft of low-maintenance, high durability Bomanite Custom Polished concrete floors. Located in the Dallas Arts District, the multi-disciplinary center presents cultural performances by emerging and mid sized organizations. The dynamic theater and front multi-level lobby are designed to encourage interaction from the street to the stage and offers open space for receptions and small performances. The polished concrete floors were a perfect acoustical accompaniment to the modern sleek building design.

VIEW: SOM, LLP ARCHITECT PHOTOS **LEARN: BUILDING DETAILS** **VISIT: DCPH WEBSITE EVENTS**

Bomanite Custom Polished Concrete System Quick Reference Guide:

VitraFlor by Bomanite™

The VitraFlor system consists of initial grinding, chemical hardening with Bomanite Stabilizer Pro, honing and polishing with protection from Bomanite VitraFinish. VitraFlor is the most cost effective of all the Bomanite Custom Polishing systems. VitraFlor by Bomanite is intended primarily for new construction or major renovation projects.

Renaissance by Bomanite™

The Renaissance system incorporates Bomanite Integral Color into the concrete prior to placement and finishing of the floor. Once cured the concrete is processed as per the standard VitraFlor system. The primary benefit is the simplicity of installation, making the system more efficient to install. Renaissance by Bomanite is intended primarily for new construction or major renovation projects.

Patène Teres by Bomanite™

The Patène Teres system utilizes Bomanite Chemical Stains and Bomanite Concrete Dyes to color fully cured concrete as part of the polishing process. The floor is ground then stained or dyed and then processed as per the standard VitraFlor system. The primary benefit of Bomanite Patène Teres is the ability to add topical color to the concrete in a wide range of colors and looks. Patène Teres by Bomanite is intended primarily for new construction or major renovation projects.

Modena by Bomanite™

The Modena system utilizes engineered Bomanite cementitious toppings containing fine decorative aggregates placed over a prepared concrete or wood floor. The topping is ground to reveal the sands and aggregates, and then processed as per the standard VitraFlor system. The primary benefit to Bomanite Modena is the ability to produce highly decorative floors with a much greater rate of installed product combined with a lower cost relative to terrazzo. Modena by Bomanite can be utilized for all types of construction projects.

Belcolore by Bomanite™

The Belcolore system incorporates Bomanite Color Hardener onto the surface of the concrete at the time of placement and finishing. The Color Hardener is broadcast over the concrete and trowel finished in a fashion similar to conventional concrete. Once cured the concrete is paste polished to the required gloss level and then processed as per the standard VitraFlor system. The primary benefit to Bomanite Belcolore is the superior abrasion resistance and range of color options. Belcolore by Bomanite is intended primarily for new construction or major renovation projects and only with paste polish aggregate exposure.

The Bomanite Custom Polishing Systems are applied by specially trained and licensed Bomanite Contractors, ensuring consistent quality in every application. Every Bomanite Licensed Contractor is part of a network of architectural concrete experts – professionals who receive ongoing technical training to ensure that your project is completed on time, on budget, and beyond your expectations. To find your local certified expert near you, visit www.bomanite.com/polishing

NEWS ▶▶▶ BOMANITE CUSTOM POLISHED CONCRETE SYSTEMS : Whether your floor is plain gray smooth, polished concrete or enhanced with vivid colors, specialty aggregate blends, embeds, or borders, polished concrete provides for an aesthetically pleasing and economical solution. Check out these designs for your own polished concrete floor.



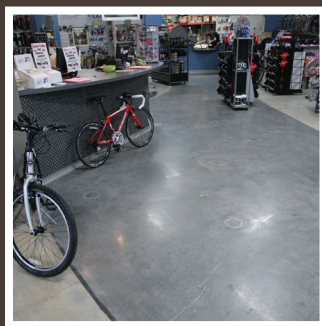
VIEW : MORE POLISHED CONCRETE IDEAS

Patene Teres



Concrete Arts, Inc.

Renaissance



Heritage Bomanite

VitraFlor



Colorado Hardscapes

Belcolore



Premier Concrete Construction

NEWS ▶▶▶ DECORATIVE CONCRETE IN COLORADO TRENDS FAR AND NEAR: by Karen Van Heukelem. Some of the concrete design trends in Colorado differ from those in other parts of the country.... Read about the latest trends in our Bomanite Licensees, published in the Nov/Dec issue of Concrete Decor Magazine **DOWNLOAD : ARTICLE**



DID YOU KNOW...?



▶ ...that Bomanite Exposed Aggregate System Sandscape Texture offers an economical way to include bands of colored concrete in your patio design? Bomanite Licensee, Premier Concrete Services located in Colorado created a simple and elegant design that fit within the customers budget. For more information on Bomanite Sandscape Texture, [click here](#).



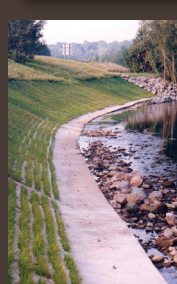
▶ ...Bomanite Imprinted Concrete can withstand Canadian winters? Bomanite Toronto installed a residential Imprinted Concrete Driveway in the Yorkshire Pattern for high durability and high end style. For more information on our Bomanite Imprint Systems and available patterns and colors, [click here](#).



▶ ...Bomanite Custom Polished Concrete floors have excellent abrasion resistance? Deerfield Academy Modena for their renovated space. Installed by Bomanite Licensee, Premier Concrete Construction for high durability, for everyday foot traffic, musical equipment and powerful art exhibits. [Click here](#) to learn more about the Bomanite Polishing Systems.



▶ ...that Bomanite Toppings Systems are perfect for existing retail and restaurant spaces? Bomanite Micro-Top is a unique two-part cementitious material that tenaciously bonds to virtually any substrate including concrete, asphalt, wood, metal, and plastic, making it ideal for renovations. To learn more, [click here](#).



▶ ...that Grasscrete can be installed on a slope adequate for slope protection or river embankments? Being structural and continuously reinforced, it allows for vehicle access to the water or over the system without issues such as rutting that would cause bank destabilization with other products. To learn more about Grasscrete and slope protection, [click here](#).



CONTACT ▶▶▶

The Bomanite product line is installed only through the licensed Bomanite network, and exclusively by specially trained and highly skilled Licensed Contractors. For the Bomanite Licensed Contractor nearest you, visit www.bomanite.com/locate or call 303.369.1115

If you know someone who would like to read Impressions, please forward this e-news.

The Bomanite Company
8777 Auburn Folsom Rd. #108
Granite Bay, CA 95746
(303) 369-1115
www.bomanite.com

We hoped you enjoyed this e-news. If you would like to subscribe to Impressions, [Click Here](#).

