

Bomanite®

Your Single Source For Innovative
Architectural Concrete Solutions

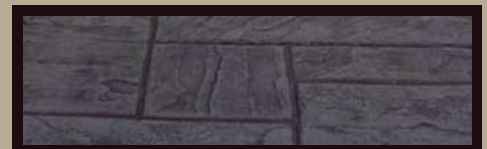
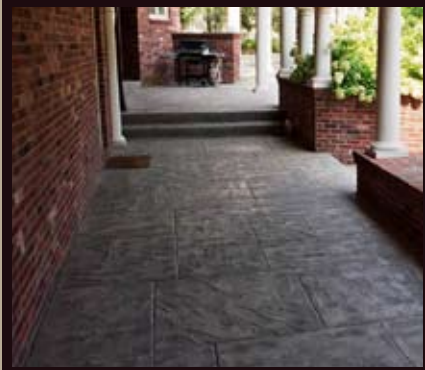
PATTERNS



YORKSHIRE STONE



Yorkshire Stone, a pattern from the Bomanite Imprint Systems collection allows for a clean, traditional Ashlar look with a texture similar to English Slate, but with more striation giving an overall Sandstone-like appearance. Appropriate for all applications where consistent depth of tool joints and texture are desired, Yorkshire Stone goes wonderfully with lighter Bomanite colors, which are great for pool deck applications or where bare feet would be the norm. The distinct, but light texture is not abrasive on the feet, but still imprints enough texture to have a good slip resistance with a light sealer application. Only Bomanite cast-in-place architectural concrete provides the beauty of natural paving with the durability and affordability of concrete. With more than 200 creative patterns and an endless palette of colors, Bomanite offers an unmatched range of innovative design options to turn ordinary concrete paving and flooring into something extraordinary.



Click Here to Visit
www.bomanite.com

The Bomanite product line is installed only through the licensed Bomanite network, and exclusively by specially trained and highly skilled Licensed Contractors. For the Bomanite Licensed Contractor nearest you, visit www.bomanite.com or call 303.369.1115.