



Your Single Source For Innovative
Architectural Concrete Solutions

ANTICO PROCESS by BOMANITE

System Guideline

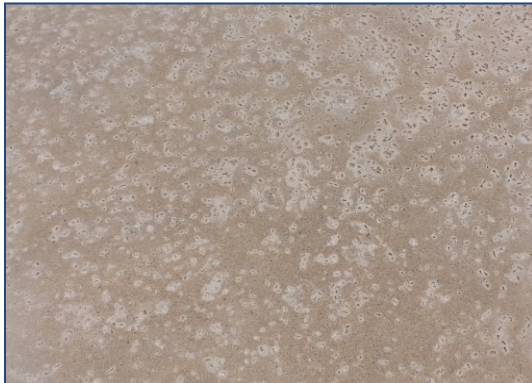
The Antico Process by Bomanite is secondary finishing process that can be coupled with or “bolted on” to select Bomanite Exposed Aggregate System finishes. The Antico Process utilizes a specialized dry version of Bomanite Surface Deactivator DRY-ETCH acid granules and flakes broadcast, then trowel finished, into the surface of the concrete to create fissures, voids and other random effects not normally seen with traditional finished concrete.

Comparable in appearance to natural travertine or manufactured cast stone, The Antico Process can emulate and compliment these types of high end finishes in a cost effective fashion. The Antico Process is best suited for exterior applications with possible use for select interior finishes. Often coupled with Bomanite Alloy or Refined exposed finishes, the Antico Process works well with lighter colors that are often used for pool decks and other areas where light reflectivity is desired.

Typically applied products such as Bomanite Con-Color and Chemical Stain are compatible with any concrete surface treated with the Antico Process. Consult the applicable technical bulletins for further information on these products and systems. Consult the Bomanite SandscapeTexture, Bomanite Sandscape Refined, Bomanite Alloy and Bomanite Revealed System Guidelines for additional exposed aggregate options.

FEATURES AND BENEFITS:

- **Highly unique – applicator controlled**
- **Cost effective – simple to apply**
- **Natural looking – variegated voids**
- **Suites Multiple Finishes**
- **Permanent**
- **Wide range of aggregate options**



GENERAL INFORMATION:

Key Components of the Antico Process

Bomanite Surface Deactivator DRY-ETCH: Concrete retarding acidic granules and flakes

Bomanite Con-Shield: Lithium Silicate chemical hardener

Bomanite Con-Clean: Reactive surface etch solution

Bomanite HydroLock: Modified acrylic semi-penetrating low gloss sealer

P.O. Box 2649, Fair Oaks, CA 95628 • (303) 369-1115 • FAX: (303) 291-0282
Web site: www.bomanite.com • E-mail: imagine@bomanite.com • April 2019

Optional Components of an Alloy System

Bomanite HydroSeal: Modified silicate penetrating sealer

Bomanite Con-Color: Reactive Lithium Silicate stains formulated for use on ready-mixed concrete

Bomanite Chemical Stain: Reactive stains formulated for use on ready-mixed concrete

Colors

Consult the Bomanite Coloration Systems Color chart for the full range of standard colors available for use with the various Bomanite Exposed Aggregate Systems that may incorporate the Antico Process. The use of Surface Deactivator DRY-ETCH granules and flakes do not significantly affect the final colors of the concrete however some light white clouding and isolated white residue is common and is considered normal to the process.

Basic Application Information

The Bomanite Antico Process and associated Surface Deactivator DRY-ETCH is only available to, and installed exclusively by, Bomanite Exposed Aggregate Licensees. The following technical information is a summary to aid in the understanding of the application process and to assist the specification process.

1. The normal process for the selected exposed finish is applied to the surface of the concrete during placement.
2. Additional finishing is undertaken to reduce lap lines and trowel licks in the finished surface.
3. The specified DRY-ETCH is broadcast onto the surface of the concrete.
4. A final trowel finish is utilized to embed the DRY-ETCH.
5. The next day (typically) the concrete is then mechanically exposed.
6. The concrete is chemically hardened.
7. Stains are applied if specified.
8. Final stain resistant treatment completes the process.
9. The concrete is protected from chemical exposure until building occupation.

Maintenance

Consult the Bomanite Exposed Aggregate Systems Maintenance Guideline for complete information on how to maintain exposed aggregate paving. The maintenance procedures are not affected by the use of the Bomanite Antico Process.

Limitations

- Final color will be influenced by factors such as environmental variations etc. A thorough sampling and mock-up process is required as part of the installation of the system.
- Variation in aggregate exposure during the etching process is a factor with all surface seeded applications.
- Lack of protection from trade damage along with chemical exposure resulting in staining will detract from the quality of the finished product.
- Surface defects and repairs may be appreciably noticeable once the process is complete.
- The application of the DRY-ETCH granules and flakes will vary from installation to installation and from pour to pour. This is inherent to the variegated nature of the process and is considered both desirable and beneficial to creating customized concrete surfaces. Consult carefully with your Bomanite Licensee prior to placing and finishing the mockups with complete and thorough review of the mockups again prior to placing and finishing the final product.

Warranty

Bomanite products are warranted to be of uniform quality within manufacturing tolerances. Since control is not exercised over its use, no warranty, expressed or implied, is made as to the effects of such use. Seller and manufacturer obligations under this warranty shall be limited to refunding the purchase price of that portion of the material proven to be defective. The user assumes all other risks and liabilities resulting from use of this product.

Additional system information, technical bulletins and specifications are available online at www.bomanite.com or through one of our Bomanite Licensed Contractors. For additional assistance with specifications or technical issues, contact The Bomanite Company.