

Bomanite®

Alloy Color Chart

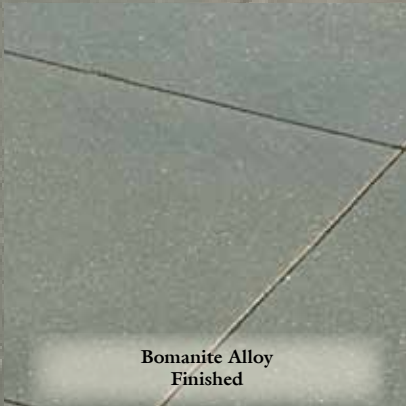
COLOR FOR:

EXPOSED AGGREGATE
SYSTEMS

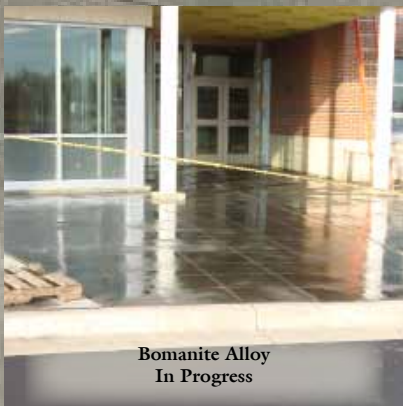
ENGINEERED
CONCRETE FOR
HIGHLY
DECORATIVE
AND DURABLE
FINISHES



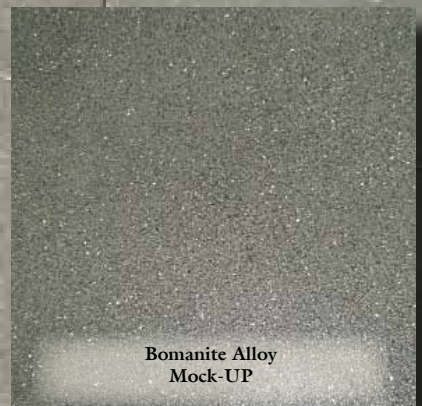
Imagine



Bomanite Alloy
Finished



Bomanite Alloy
In Progress

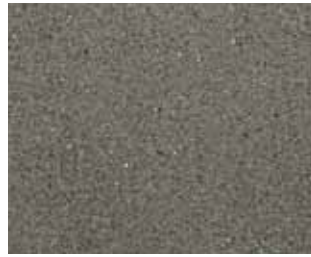


Bomanite Alloy
Mock-UP

Bomanite Alloy Color Chart



EX-SSA-100112-16



EX-SSA-100112-15



EX-SSA-100112-14



EX-SSA-100112-13



EX-SSA-100112-12



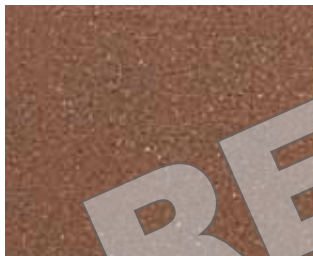
EX-SSA-100112-11



EX-SSA-100112-10



EX-SSA-100112-09



EX-SSA-100112-08



EX-SSA-100112-07



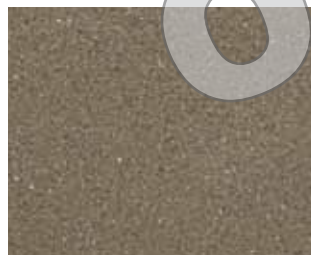
EX-SSA-100112-06



EX-SSA-100112-05



EX-SSA-100112-04



EX-SSA-100112-03



EX-SSA-100112-02



EX-SSA-100112-01

IMPORTANT NOTES:

Bomanite Alloy utilizes a combination of natural and manmade aggregates, encapsulated in an engineered binder, and applied via a dry shake method to freshly placed concrete. Use the Bomanite Coloration Systems Color chart for Bomanite Alloy base colors. Aggregates are typically 1/8" or less in size for a typical Bomanite Alloy installation, but can utilize slightly larger aggregates up to 1/4" in size for custom applications. The use of aggregates larger than this range may require the use of a different Bomanite process such as Bomanite Revealed. Standard blends of reflective aggregates are pictured, however custom blends are commonplace.

Variations of the aggregates in Bomanite Alloy may include, but are not limited to; size, shape, color, texture, gloss and exposure of the decorative aggregate. The finished Bomanite Alloy may have areas with more or less aggregate showing through the surface of the concrete with occasional areas of fine sands only being exhibited. The color of Bomanite Alloy can vary from pour to pour slightly due to factors such as, but not limited to; ambient temperature, relative humidity, water content of the concrete slab Alloy is being incorporated into, moisture content of the sub-base as well as sub-base type, early exposure to rain or sun, color of decorative aggregates used in the mix.

It is strongly recommended that samples be created, viewed and approved using construction techniques and materials identical to those that will be used in the actual construction of the project. This sampling process must be completed prior to specifying the final color and appearance. Bomanite Alloy is only available through Bomanite Exposed Aggregate Concrete Licensed Contractors.

Your authorized Bomanite Exposed Aggregate Licensed Contractor is:

Bomanite®

The Bomanite Company
P.O. Box 2649
Fair Oaks, CA 95628
(303) 369-1115 Fax: (303) 291-0282
www.bomanite.com

©2019 The Bomanite Company. Bomanite® is a registered trademark and servicemark with the U.S. Patent Office and other countries. WEB0219

Chart 900.12